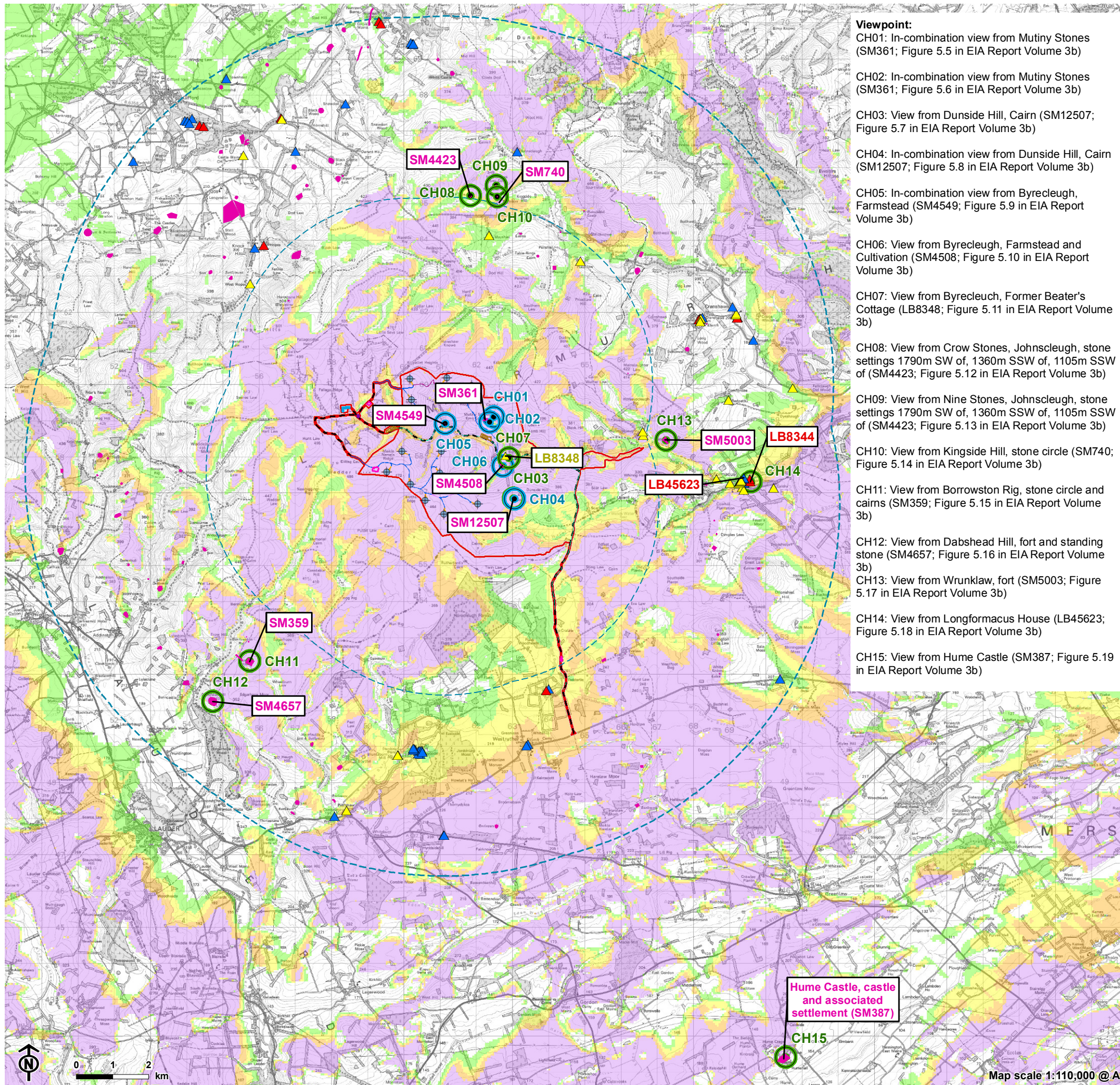


Figure 5.4: The Location of Visualisations to Inform the Assessment of Setting Change



- Viewpoint:**
- CH01: In-combination view from Mutiny Stones (SM361; Figure 5.5 in EIA Report Volume 3b)
  - CH02: In-combination view from Mutiny Stones (SM361; Figure 5.6 in EIA Report Volume 3b)
  - CH03: View from Dunside Hill, Cairn (SM12507; Figure 5.7 in EIA Report Volume 3b)
  - CH04: In-combination view from Dunside Hill, Cairn (SM12507; Figure 5.8 in EIA Report Volume 3b)
  - CH05: In-combination view from Byrecleugh, Farmstead (SM4549; Figure 5.9 in EIA Report Volume 3b)
  - CH06: View from Byrecleugh, Farmstead and Cultivation (SM4508; Figure 5.10 in EIA Report Volume 3b)
  - CH07: View from Byrecleugh, Former Beater's Cottage (LB8348; Figure 5.11 in EIA Report Volume 3b)
  - CH08: View from Crow Stones, Johnscleugh, stone settings 1790m SW of, 1360m SSW of, 1105m SSW of (SM4423; Figure 5.12 in EIA Report Volume 3b)
  - CH09: View from Nine Stones, Johnscleugh, stone settings 1790m SW of, 1360m SSW of, 1105m SSW of (SM4423; Figure 5.13 in EIA Report Volume 3b)
  - CH10: View from Kingside Hill, stone circle (SM740; Figure 5.14 in EIA Report Volume 3b)
  - CH11: View from Borrowston Rig, stone circle and cairns (SM359; Figure 5.15 in EIA Report Volume 3b)
  - CH12: View from Dabshead Hill, fort and standing stone (SM4657; Figure 5.16 in EIA Report Volume 3b)
  - CH13: View from Wrunklaw, fort (SM5003; Figure 5.17 in EIA Report Volume 3b)
  - CH14: View from Longformacus House (LB45623; Figure 5.18 in EIA Report Volume 3b)
  - CH15: View from Hume Castle (SM387; Figure 5.19 in EIA Report Volume 3b)

- Turbine
  - Site Boundary
  - Substation extension
  - Construction compound
  - Existing construction compound
  - Borrow pit
  - Borrow pit search area
  - Temporary hardstanding
  - Permanent hardstanding
  - Battery storage
  - Proposed new track (floating)
  - Proposed new track
  - Proposed light vehicle track (3m wide)
  - Proposed existing track upgrade
  - Existing track
- Designated Heritage Assets**
- 5 km inner study area from outermost turbines
  - 10 km outer study area from outermost turbines
  - Scheduled Monument (SM)
  - Listed Building - Category A
  - Listed Building - Category B
  - Listed Building - Category C
- Theoretical blade tip visibility (220m)**
- 1-4 turbines visible
  - 5-8 turbines visible
  - 9-12 turbines visible
  - 13-15 turbines visible
- Visualisations**
- Wireline visualisations
  - Photomontages visualisations

Hume Castle, castle and associated settlement (SM387)

CH15

Map scale 1:110,000 @ A3