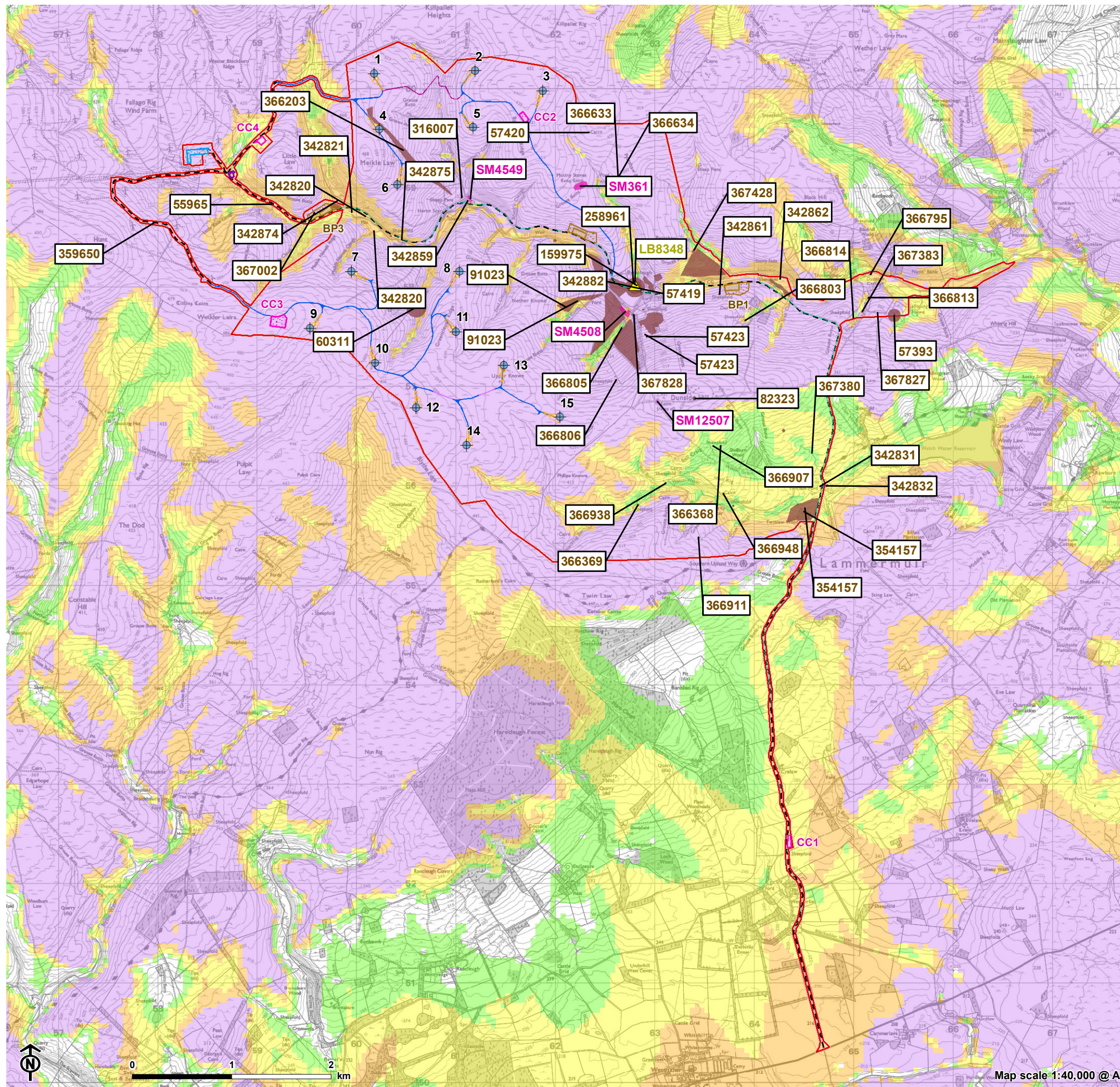


Figure 5.1a: The Location of Heritage Assets within the Site



- Turbine
- Site Boundary
- Substation extension
- Construction compound
- Existing construction compound
- Borrow pit
- Borrow pit search area
- Temporary hardstanding
- Permanent hardstanding
- Battery storage
- Proposed new track (floating)
- Proposed new track
- Proposed light vehicle track (3m wide)
- Proposed existing track upgrade
- Existing track

Designated Heritage Assets

- Scheduled Monument (SM)
- Listed Building – Category C (Beater's Cottage, Byrecleugh; LB8348)

Non-designated Heritage Assets

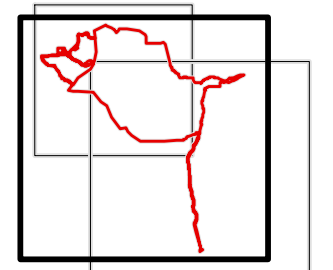
- Historic Environment Record Asset
- Historic Environment Record Asset

Theoretical blade tip visibility (220m)

- 1-4 turbines visible
- 5-8 turbines visible
- 9-12 turbines visible
- 13-15 turbines visible

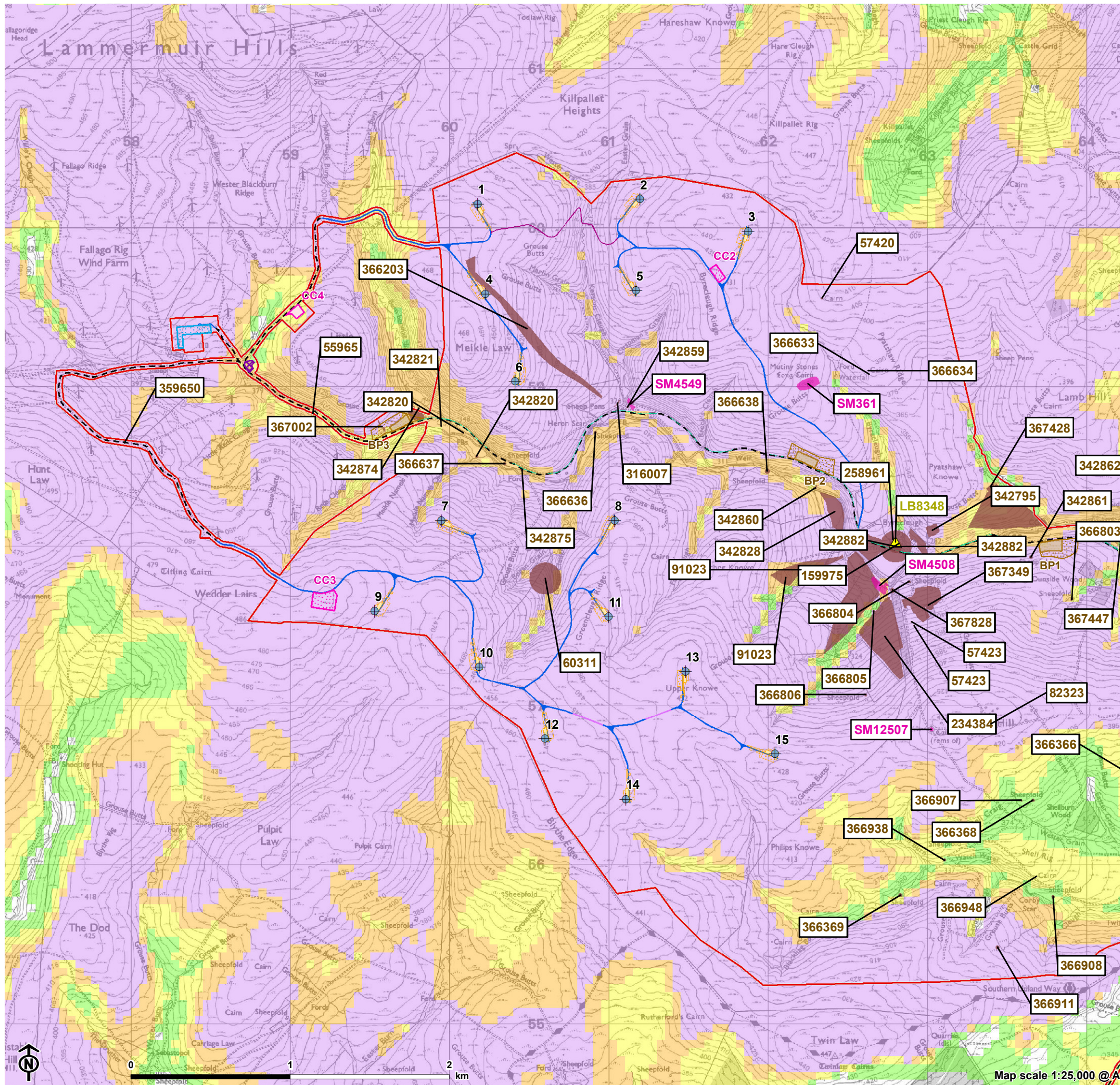
Notes:

The ZTV is calculated to turbine tip height (220m) from a viewing height of 2m above ground level. The terrain model assumes bare ground and is derived from OS Terrain 50 height data (obtained from Ordnance Survey in 2023). Earth curvature and atmospheric refraction have been taken into account. The ZTV was calculated using ArcMap 10.8.1 software.



a

Figure 5.1b: The Location of Heritage Assets within the Site



Legend

- Turbine
- Site Boundary
- Substation extension
- Construction compound
- Existing construction compound
- Borrow pit
- Borrow pit search area
- Temporary hardstanding
- Permanent hardstanding
- Battery storage
- Proposed new track (floating)
- Proposed new track
- Proposed light vehicle track (3m wide)
- Proposed existing track upgrade
- Existing track

Designated Heritage Assets

- Scheduled Monument (SM)
- Listed Building – Category C (Beater's Cottage, Byrecleugh; LB8348)

Non-designated Heritage Assets

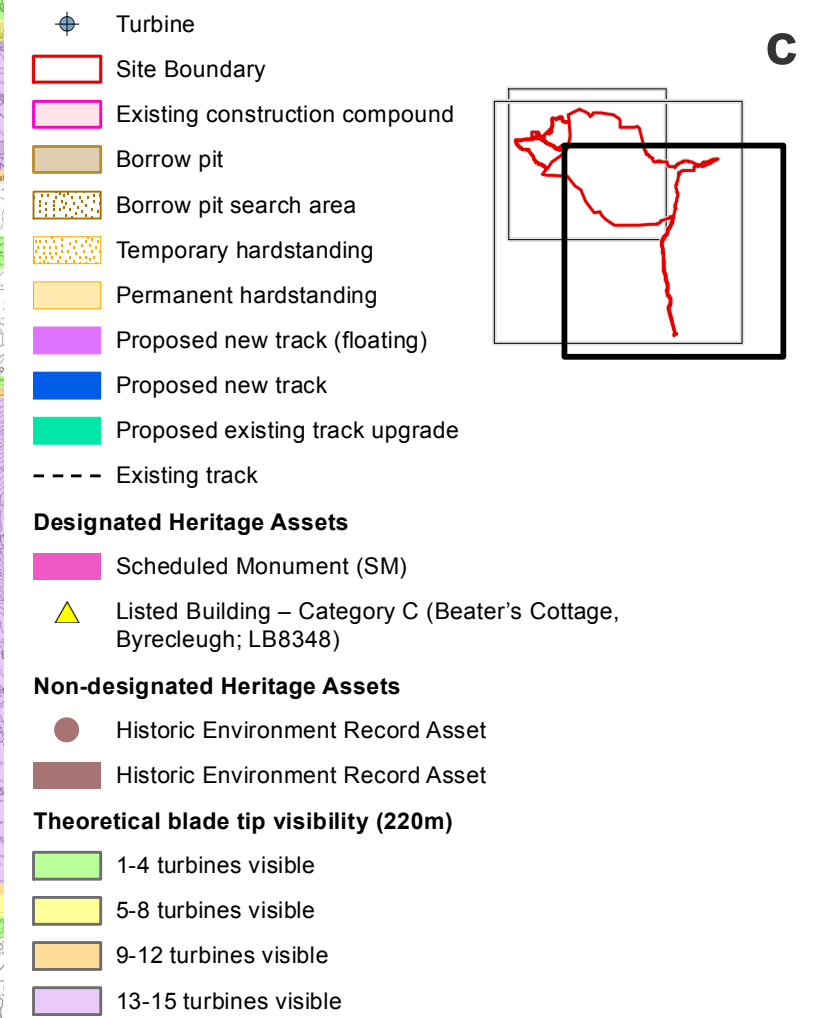
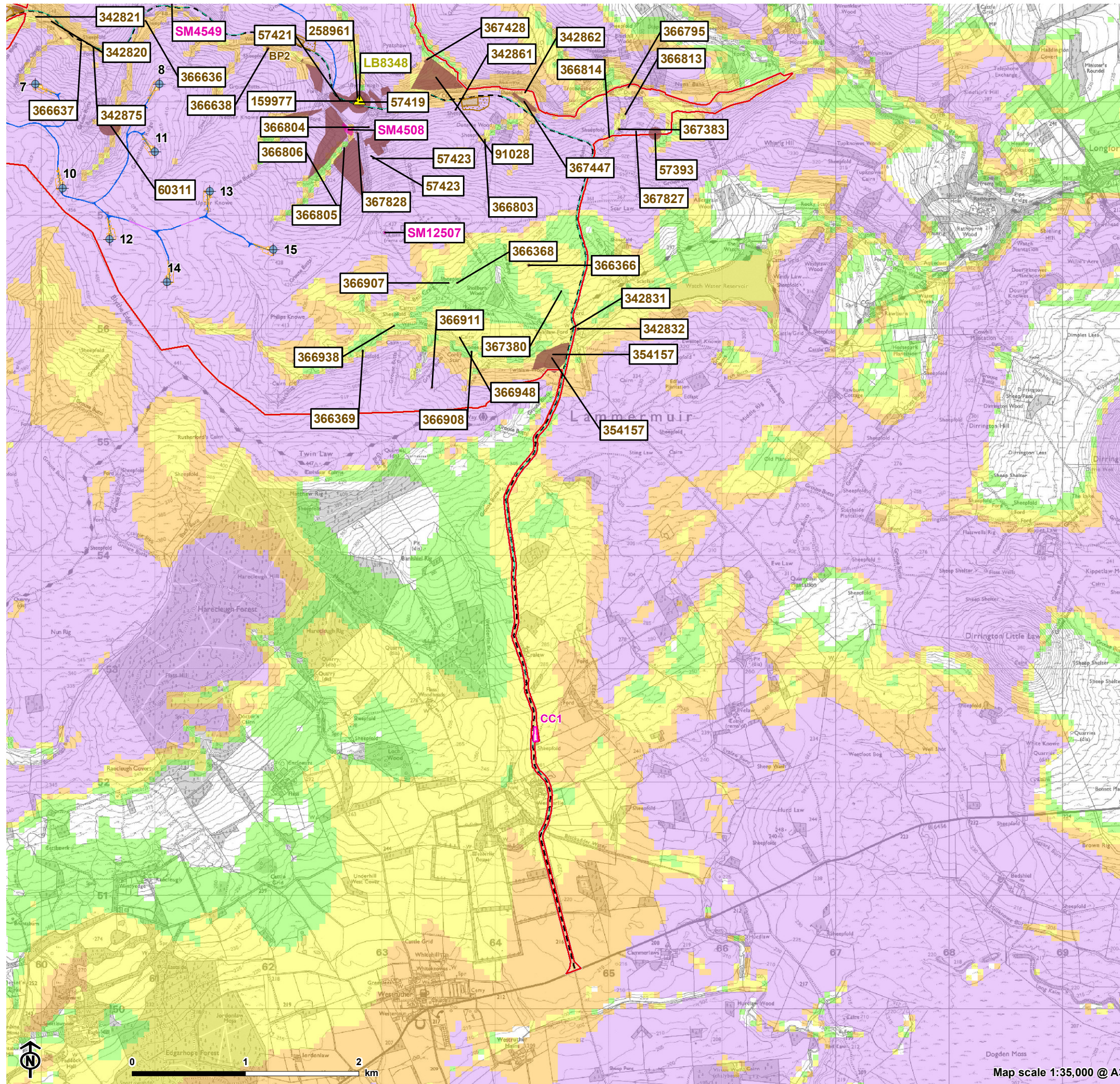
- Historic Environment Record Asset
- Historic Environment Record Asset

Theoretical blade tip visibility (220m)

- 1-4 turbines visible
- 5-8 turbines visible
- 9-12 turbines visible
- 13-15 turbines visible

Notes:
The ZTV is calculated to turbine tip height (220m) from a viewing height of 2m above ground level. The terrain model assumes bare ground and is derived from OS Terrain 50 height data (obtained from Ordnance Survey in 2023). Earth curvature and atmospheric refraction have been taken into account. The ZTV was calculated using ArcMap 10.8.1 software.

Figure 5.1c: The Location of Heritage Assets within the Site



Notes:
The ZTV is calculated to turbine tip height (220m) from a viewing height of 2m above ground level. The terrain model assumes bare ground and is derived from OS Terrain 50 height data (obtained from Ordnance Survey in 2023). Earth curvature and atmospheric refraction have been taken into account. The ZTV was calculated using ArcMap 10.8.1 software.