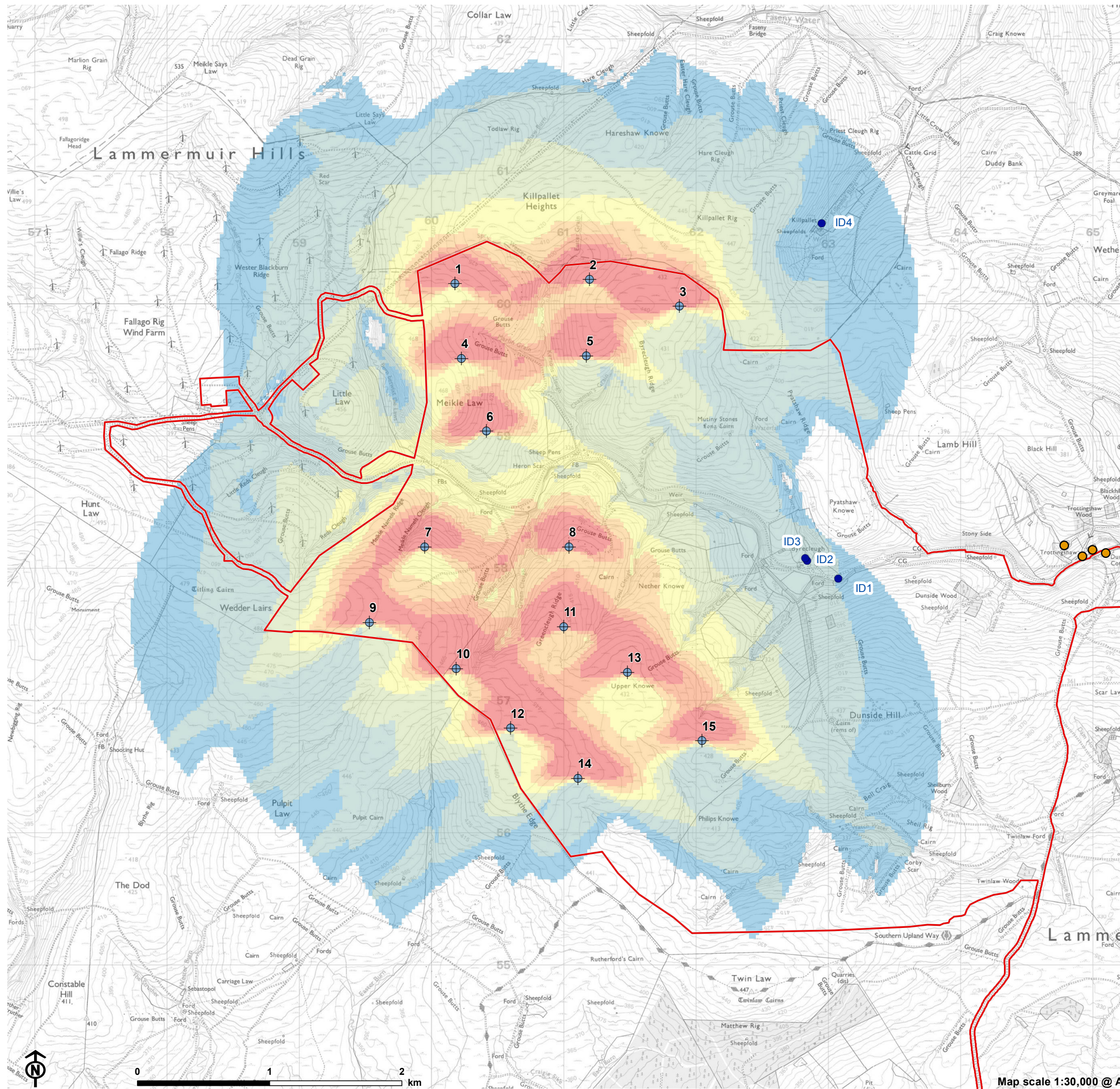


: Figure 12.1: Shadow Flicker



- Turbine
- Site Boundary
- House not included in the shadow flicker assessment
- House included in shadow flicker assessment
- ID1: Keepers house
- ID2: 2 Byrecleugh farm cottage
- ID3: 4 Byrecleugh farm cottage
- ID4: Kilpallet

Theoretical hours of shadow flicker per year

- 5 - 30
- 31 - 100
- 101 - 200
- 201 - 300
- 301 - 400
- 401 - 500
- 501 - 1,202

Notes:
 Less than 30 hours of shadow flicker per year is considered to have a minimal effect on properties.
 Theoretical occurrence does not take into account screening by vegetation and topography.
 Study area = 1800m (10 x rotor diameter)
 Sun angle = 2° above horizon
 Viewer height = 1.5m