

Dunside
wind farm



Dunside wind farm :

Pre-Application Consultation (PAC) Report

JUNE 2023

EDF Renewables

Dunside wind farm Pre-Application Consultation Report

Contents

1. Introduction	4
2. EDF Renewables Approach	6
3. Consultation Activities	8
Public Exhibitions	
4. Dunside wind farm Website	12
5. Leaflet Distribution	13
6. Social Media	13
7. News Media	14
8. Email Communication	14
9. Stakeholder Communication	15
Community Councils	15
Politicians	16
EIA Scoping Report Consultees	17
10. Borders Doors Open Days Festival	19
11. Community Engagement Timeline	20
12. Consultation Feedback	21
13. Design Responses to Public Consultation Feedback	30
Appendices	34
Contact Details	53

EDF Renewables

Dunside wind farm Pre-Application Consultation Report

Appendices

Appendix 1 — Site Location Map	35
Appendix 2 — Press Adverts	36
Appendix 3 — Public Exhibition Leaflets	37
Appendix 4 — Press Releases 2022 – 2023	40
Appendix 5 — Feedback Form	43
Appendix 6 — Social Media Posts 2022 - 2023	44
Appendix 7 — Media Coverage 2022 – 2023	46

1. Introduction — Dunside wind farm

An application for Dunside wind farm has been submitted by EDF Energy Renewables Ltd (hereafter referred to as EDF Renewables) one of the country's leading renewable companies, working with local landowner, the Roxburghe Estates.

EDF Renewables is committed to working with local communities and the landowner to deliver a project that will create and sustain local employment, use the latest technologies to accelerate our transition to net zero and demonstrate a commitment to the environment, local communities, the area's biodiversity, and cultural heritage.

The Dunside wind farm project comprises up to 15 turbines with the potential to generate around 108MW. This Pre-Application Consultation Report (PAC Report) sets out the measures taken by EDF Renewables in relation to consultation and publicity.

The Town & Country Planning (Development Management procedure) Scotland Regulations 2017 require that "Major" and "National" planning applications be accompanied by pre-application consultation reports. Whilst this does not relate directly to the Electricity Act applications, EDF Renewables has adopted these principles as good practice.

The Planning Series Circular 3:2013 – Development Management Procedures (PCS 3:2013) also provides guidance for consultation. It emphasises the Scottish Government's wish to encourage improved trust and positive working relationships from the earliest stages in the planning process and to provide, where possible, an early opportunity for community views to be reflected in proposals. As part of this requirement, it states that:

"...both pre-application consultations with the community and pre-application discussions with the planning authority and statutory consultees are intended to add value at the start of the development management process. They should improve the quality of the proposal and allow prospective applicants the opportunity to amend their emerging proposals in light of community, statutory consultee, and planning authority opinion."

The PAC Report has been prepared by Spreng Thomson who were appointed by EDF Renewables to support the business with the planning and delivery of the consultation and communication phase of the project.

All communications for the project carried the EDF Renewables brand identity alongside the dedicated Dunside wind farm identity developed specifically for the project.

2. EDF Renewables Approach

EDF Renewables is committed to engaging with local communities to benefit from their collective knowledge, expertise and insight. This includes being good neighbours from the outset - sharing information and ideas, being respectful and always acting with integrity.

EDF Renewables strives to be a good custodian – ensuring plans take a long-term perspective and demonstrate care for the environment, the area's biodiversity, and cultural heritage. In developing the proposal, EDF Renewables has worked with the landowner to develop habitat management plans that will improve the existing biodiversity of the application site.

The EDF Renewables' mission is to lead the way in the delivery and operation of renewable technologies and to do this in a way that enables people to express their views openly. To achieve this, the first series of public consultation exhibitions was held in March 2022 – at the outset of the EIA Scoping process.

The location for Dunside wind farm is close to the existing Fallago Rig wind farm in the Lammermuir Hills. Fallago Rig wind farm has been successfully operating for 10 years with 11 locally based full-time EDF Renewables staff currently working at the wind farm year-round. Two more apprentices will join full-time in 2024 when their sponsored college courses are completed.

It has created skilled local jobs and apprenticeships throughout this time and works closely with contractors and suppliers based in the Scottish Borders and Lothians. Should Dunside wind farm be consented, the project would create additional need for local technicians and engineers. Dunside wind farm would be able to take advantage of the existing infrastructure including the Fallago Rig access road and onsite substation. [See Appendix 1 on page 35](#)

The Fallago Environment Fund, which is administered by The Tweed Forum, was established to share the benefits of the Fallago Rig wind farm. The Tweed Forum coordinates the Fund on behalf of the Roxburghe Estates, EDF Renewables and Hermes Investment Management. Applications to the Fund are considered twice each year.

The Fund aims to enhance the quality of life for local communities and visitors to the Borders through investment in the protection, enhancement and appreciation of the natural, built and cultural heritage of the Scottish Borders.

Since being established, the Fund has donated more than £1.66 million to 142 projects across the Scottish Borders. This includes projects ranging from the restoration of iconic Borders landmarks, museums and attractions to support for youth work, education and environmental initiatives, mountain bike trails, community spaces and more.

The Fund invests in local and regional projects right across the Scottish Borders, including areas that do not have access to a local community benefit fund.

At the outset of the project, initial feasibility studies by EDF Renewables led the company to take forward public and stakeholder consultation for a wind farm in this location. Following a series of landscape-led reviews, an EIA scoping layout was developed, showing 20 wind turbines with an overall height to blade tip of 260 metres.

This layout used the largest available onshore turbines that would be technically suitable for the Dunside site and focused development in areas where available environmental information and the landscape feasibility work showed potential for turbines to be positioned.

It provided a realistic maximum envelope (in terms of size, scale, visibility etc.) to be used for consultation on the scope of the environmental impact assessment. Consultation is a key part of the development process enabling EDF Renewables to benefit from the knowledge, expertise and ideas of individuals and groups across the area to inform and refine proposals for the wind farm.

To assist with the consultation process and to make information as accessible as possible to people living and working in the area, a wide range of communication approaches were adopted. These included: letters to residents, public exhibitions, leaflets, media releases, advertisements, posts on social media channels, Doors Open Days site visits to Fallago Rig wind farm, a dedicated Dunside wind farm website and 3D visualisation software available for demonstration at the public exhibitions.

This activity has taken place while EDF Renewables has been carrying out detailed design and environmental studies to inform the final application submitted in June 2023.

In light of this work, the formal application for Dunside wind farm comprises up to 15 turbines with a maximum to blade tip height of 220 metres and the potential to generate approximately 108MW.

This report provides information about the approach, process, timeline and outputs from the consultation and engagement process carried out between March 2022 and June 2023.

3. Consultation Activities

Public Exhibitions

EDF Renewables planned and delivered three series of Public Exhibitions. All three exhibition rounds were held in the village halls in Gifford, Longformacus and Westruther to provide opportunities for communities closest to the proposed development to find out about Dunside wind farm and to meet some of the team involved. The exhibitions were hosted by representatives of the EDF Renewables' Dunside wind farm project team, LUC (EIA consultants) and Spreng Thomson.

Each exhibition series (March 2022, October 2022, June 2023) was advertised in local media including:

- Southern Reporter / Berwickshire News
- Border Telegraph
- East Lothian Courier

Examples of the advertisements are included in [Appendix 2 on page 36](#)

At the exhibitions, attendees were able to learn more about the proposed wind farm through:

- large-scale, free-standing banners providing information about EDF Renewables and the proposed Dunside wind farm
- maps showing the potential location and layout of Dunside wind farm
- copies of the Scoping Reports
- discussions with members of the EDF Renewables team and the EIA consultees

All those attending were invited to complete a feedback form and/or to leave their contact details so that they could be advised of future opportunities to keep up-to-date with the project. A number of attendees completed feedback forms. The feedback form is included in the appendix section of this report — [See Appendix 5 on page 43](#)

The first exhibition series was held as follows:

Longformacus Village Hall - 16 March 2022

The exhibition was open to the public from 16.00 – 20.00

13 people attended.

Westruther Village Hall - 17 March 2022

The exhibition was open to the public from 16.00 – 20.00

15 people attended.

Gifford Village Hall - 24 March 2022

The exhibition was open to the public from 14.00 – 18.00

21 people attended.

The second exhibition series was held in October 2022 as follows:

Longformacus Village Hall – 25 October 2022

The exhibition was open to the public from 15.00 – 19.00

12 people attended.

Gifford Village Hall – 26 October 2022

The exhibition was open to the public from 15.00 – 19.00

15 people attended.

Westruther Village Hall – 27 October

The exhibition was open to the public from 15.00 – 19.00

12 people attended.

In June 2023 a final series of public exhibitions will share information about the proposed final layout of Dunside wind farm and the findings of the Environmental Impact Assessment. Specialists involved with carrying out the Environmental Impact Assessment will attend the public exhibitions along with members of the EDF Renewables development team.

**The exhibition banners will show the final layout and a selection of photomontages.
The exhibitions are as follows:**

Westruther Village Hall - Tuesday 20 June 2023

The exhibition will be open to the public 15.00 – 19.00

Gifford Village Hall – Wednesday 21 June 2023

The exhibition will be open to the public 15.00 – 19.00

Longformacus Village Hall – Thursday 22 June 2023

The exhibition will be open to the public 15.00 – 19.00

4. Dunside wind farm Website

In advance of the first exhibition series in March 2022, a dedicated Dunside wind farm project website was launched. www.dunsidewindfarm.co.uk

The website and social media channels (Facebook and LinkedIn) went live on 28 February 2022.

The website has four key sections **Home, About, News and Resources**. It provides access to information about EDF Renewables, the proposed wind farm and the partners involved.

The website includes core information including the location and scale of the proposed wind farm as well as details about the process involved in preparing the application and how the community would be kept informed as the project progresses.

A series of **Q&As** on the website provides answers to key questions about the proposed development. The **Resources** section provides links to information about the wind farm and access to exhibition materials, with the **News** section highlighting newsworthy events including dates and locations of exhibitions and a link to the **Scoping Report**.

Once the application is submitted, the EIA Report will be available to download from the project website. Copies of the public exhibition materials will also be available to view on the website via a link to the Virtual Exhibition Portal.

An online contact form enables people to make enquiries about Dunside wind farm and full contact details for EDF Renewables are available for anyone wishing to communicate directly with the Company.

5. Leaflet Distribution

To ensure that the opportunity to attend the public exhibitions was highlighted to residents, leaflet drops were arranged prior to each series of exhibitions.

The leaflet provided core information about the proposed Dunside wind farm, dates, times and locations for the public exhibitions and details of the website so that those unable to attend the exhibitions could access the information via www.dunsidewindfarm.co.uk

Copies of the leaflets are shown in **Appendix 3 on page 37**

In addition, the leaflets were sent to the village halls hosting the exhibitions for display on noticeboards.

Following the first exhibition series in March 2022, a direct mail letter was issued to local communities thanking those who had attended and inviting those who had been unable to attend to view the exhibition online at www.dunsidewindfarm.co.uk

6. Social Media

To reach as many people as possible, the exhibitions were promoted via the Dunside wind farm website as well on the Dunside wind farm Facebook and LinkedIn social media channels.

This was repeated prior to each exhibition series. Examples of the social media posts can be found at **Appendix 6 on page 44**

7. News Media

In addition to the public notice advertisements in local publications, media releases were issued to local media including:

- Border Telegraph / Southern Reporter
- Berwickshire News
- East Lothian Courier

These attracted coverage from the publications above in March and October as well as being covered in renews (a renewable energy newspaper) in October 2022. Examples in [Appendix 7 on page 46](#)

In addition to the print and online coverage generated by the media releases, in October 2022, Radio Borders broadcast a short piece about the exhibitions featuring a member of the EDF Renewables project team.

8. Email Communication

To keep in touch with those who had attended the first series of exhibitions and had provided contact details, direct emails were issued to alert them to the second and third series of exhibitions in October 2022 and June 2023.

Following the Fallago Rig wind farm Doors Open Days event in September 2022, EDF Renewables emailed all those who had provided their contact details to alert them to the second and third series of exhibitions in October 2022 and June 2023.

9. Stakeholder Communication

At the outset of the project, stakeholder mapping was carried out to guide the programme of consultation, this included: Scottish Borders Council, East Lothian Council, local councillors, local MSPs and MPs, local community councils, community groups and special interest groups.

Community Councils

EDF Renewables has been in contact with the following Community Councils:

Scottish Borders Area

- Duns Community Council
- East Lammermuir Community Council
- Gavinton, Fogo & Polwarth Community Council
- Gordon & Westruther Community Council
- Greenlaw & Hume Community Council
- Kelso Community Council
- Lammermuir Community Council
- Lauderdale Community Council

East Lothian Area

- Dunpender Community Council
- Gifford Community Council
- Garvald & Morham Community Council
- Haddington & District Community Council
- Humbie, East & West Saltoun & Bolton Community Council

In March 2022, EDF Renewables contacted the surrounding community councils to offer meetings. In response to this, members of the development team were invited to attend the Gifford Community Council Meeting (via Zoom) in March, the Greenlaw & Hume Community Council meeting in person in May 2022 and the Gavinton Polwarth & Fogo Community Council meeting in person in February 2023.

EDF Renewables engaged with relevant community councils throughout the pre-application process. A monthly community council update was sent from EDF Renewables to keep community councils informed about progress and to advise them of forthcoming activity, including the public exhibitions.

Politicians

Letters inviting local politicians to visit the existing Fallago Rig wind farm or to have face-to-face or online meetings were sent from EDF Renewables. This resulted in two site visits in 2022 during the pre-application process:

- In May 2022, Rachael Hamilton, Scottish Conservative and Unionist MSP for Ettrick, Roxburgh and Berwickshire visited Fallago Rig wind farm site accompanied by members of the EDF Renewables Dunside wind farm project team. A photo of the visit is featured on the Dunside wind farm website: <https://dunsidewindfarm.co.uk/rachael-hamilton-msp-visits-site-for-the-potential-dunside-wind-farm/>
- The following month, June 2022, John Lamont, Conservative MP for Berwickshire, Roxburgh and Selkirk visited Fallago Rig wind farm site accompanied by members of the EDF Renewables Dunside wind farm project team.

As well as monthly updates to community councils, EDF Renewables issued a further invitation to stakeholders in March 2023. The personal letter was sent to local and national politicians and community councils offering the opportunity to meet the EDF Renewables team on site, face-to-face or online. While some acknowledgments were received, there were no further requests for a meeting.

EIA Scoping Report Consultees

In March 2022 the EIA Scoping Report for the Dunside wind farm was issued for consultation. Feedback from those consulted on the EIA Scoping Report was taken into account in the Energy Consents Unit Scoping Opinion and the feedback was considered further in the Dunside wind farm EIA Report. A list of those organisations consulted follows.

Consultees

Crown Estate Scotland
Edinburgh Airport
MOD Defence Infrastructure Organisation
NERL (NATS En-route Limited)
Scottish Water
Scottish Environment Protection Agency (SEPA)

Local Authorities

East Lothian Council
Scottish Borders Council
Scottish Borders Council Archaeology Service

Community Councils

Gifford Community Council
Greenlaw and Hume Community Council
Lauderdale Community Council

Environmental organisations

Fisheries Management Scotland

Historic Environment Scotland

John Muir Trust

Marine Scotland Science

NatureScot

River Tweed Commission

Royal Society for the Protection of Birds (RSPB)

ScotWays

Transport Scotland

Other stakeholders

The British Horse Society

10. Borders Doors Open Days Festival 2022

In September 2022, EDF Renewables participated in the Borders Doors Open Days Festival. This is Scotland's largest free festival that celebrates Scotland's places, history, and culture, new and old.

The Festival offers access to over a thousand sites and events across Scotland with the aim of making Scotland's built and cultural heritage accessible to people living in and visiting the country. Doors Open Days is supported by Historic Environment Scotland and is part of European Heritage Days. Doors Open Days events should be free and provide access to places not usually accessible to the public.

As the proposed Dunside wind farm is located close to the existing Fallago Rig wind farm, this was a suitable location for a Doors Open Days event. There is an access road suitable for coach travel and an existing substation where 11 full time employees are based. The event proved a popular opportunity for people to visit a wind farm, to understand how they operate and to ask questions about future plans. In total 90 visitors participated in the tours. While the tours focused on Fallago Rig wind farm, Dunside wind farm development team members were present to assist with the tours and discuss future plans with visitors.

In addition to being promoted through the Borders Doors Open Days Festival site, EDF Renewables highlighted the Doors Open Days opportunity as follows:

- 19 August - media release issued to local and Scotland-wide publications and news outlets
- W/C 29 August - a digital leaflet was issued via email and supported by social media posts
- Promoted the visits on LinkedIn

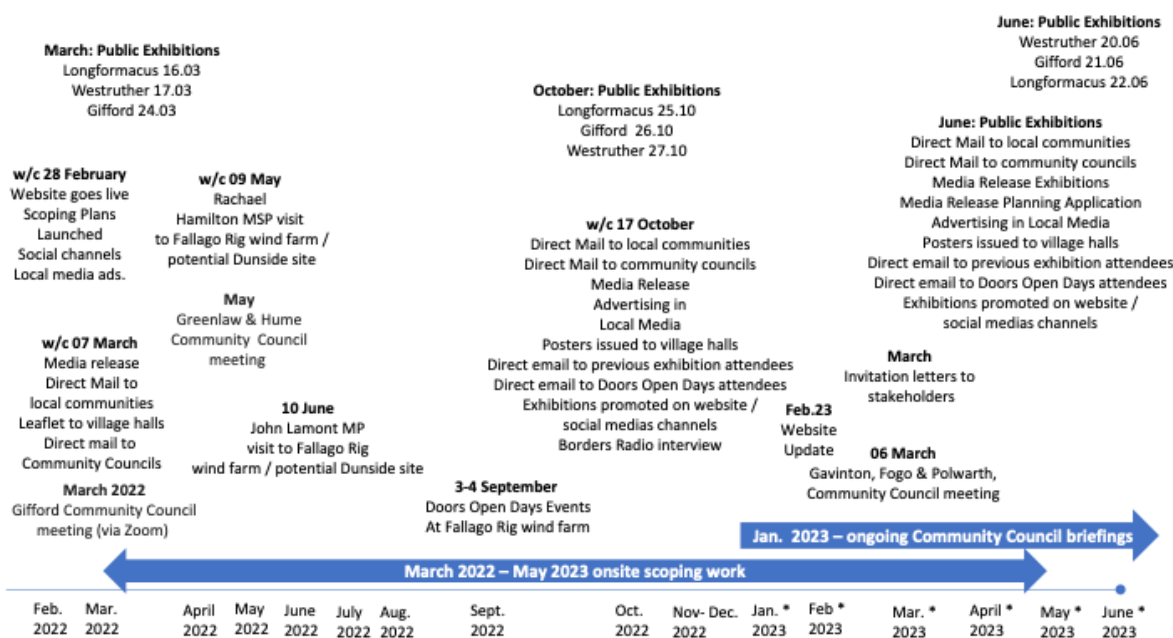
On Saturday, 3 September two tours were arranged. They departed from Lauder and travelled to Fallago Rig via Westruther. The first four-hour visit departed at 09.30 and returned at 13.20. In the afternoon the tour left at 13.30 and returned at 17.20.

On Sunday, 4 September 2022 the tour departed Duns at 09.45 returning at 13.00.

Once at Fallago Rig, visitors were split into three groups to allow them to see the inside of a turbine, visit the Fallago Rig substation and be briefed on the wind farm and the local area. The visits, which involved people of all age groups, including families with children, were well received by all participants.

The Borders Doors Open Days Festival organisers sought feedback and shared relevant comments with EDF Renewables. These are highlighted on [page 29](#) of this report.

11. Dunside wind farm Community Engagement Timeline



12. Consultation Feedback – March 2022

Over the course of the consultation period, several topics were raised with the EDF Renewables Dunside wind farm project team. These were raised via the feedback forms, directly with members of the team at the public consultation exhibitions, through communication via the Dunside wind farm website or from community councils.

Topics of interest included:

Longformacus (DARK BLUE)

Westruther (LIGHT BLUE)

Gifford (ORANGE)

Natural Heritage / Cultural Heritage / Wellbeing

A question was asked about the potential impact on bird life in the area including Curlews, Lapwings and Skylarks.

An attendee involved in estate management expressed concern about the impact on wildlife - including birds.

One attendee asked a series of detailed questions about the ecological impact, specifically on fungi species which they feared may not be considered during environmental assessment.

There were general questions about the impact of the potential development on any historical or archaeological assets at Dunside.

One attendee was interested to find out whether there might be any impact on peat at the site.

There was one question posed regarding the potential health impact on local residents. They mentioned a recent study on wind farms in Canada and the impact of noise pollution on local residents.

Community Benefit

Community benefit was the topic that attracted the most interest from those who attended the public consultation exhibitions. On each occasion, attendees were keen to establish whether the community fund would apply to their community.

There was considerable interest in how a future community fund might be administered. Comments included:

“In my opinion, (community funds) should be administered more objectively than currently. Local people in very small villages end up in a kind of feeding frenzy over these untold riches. If any money committed could be directed to issues like the insulation of old houses or helping households to move from reliance on oil to renewables (solar panels, ground source) that would seem to me a non-contentious community benefit for all.”

Over the two series of exhibitions, there was a notable interest in whether community funds could be used to support rural communities with shifting from oil and gas to renewable sources of power.

Interest was expressed as to whether community funds could be used to support solar, ground source heat pumps or other sources of renewable energy.

One community council enquired as to whether there could be a community turbine and would the community need to raise matched funding for this. Mention was made that Westruther Village Hall had already benefitted from the Fallago Rig Tweed Forum Fund and funds had been used for solar panels for the village hall.

One attendee asked whether community funds could be used to reduce energy bills for the local community however they felt that the potential annual fund (estimated by one attendee at £200K) would in no way meet these needs.

Mention was made of another potential development in the area that was proposing a form of community ownership and whether this might be available with the Dunside wind farm.

Interest was expressed as to whether the wind farm tracks could be used for recreational purposes such as cycling.

Wind farm development - general

In general, the mood of the exhibition attendees was either positive – some attendees very pro wind farms or neutral towards windfarms. A small number of people explained they were not in favour due to the cumulative impact of wind farms on the area – including the impact of Dunside wind farm in relation to Fallago wind farm.

Several attendees mentioned other potential wind farm developments and expressed concern about the cumulative impact of these on the area and the considerable work for communities to inform themselves and, if required, to object to these applications. There were questions as to whether the feedback from previous proposals would be considered in the potential Dunside wind farm.

Some attendees were interested to understand the land ownership of the site and where the boundaries are.

There were enquiries about the funding package around the development.

A question was asked as to whether the potential site could support solar panels as well as turbines.

An attendee asked why more turbines were not being located offshore rather than onshore. Several attendees expressed a preference for nuclear rather than wind power.

One attendee asked whether the carbon footprint of the entire project would be considered including where turbines were manufactured and shipped from.

Turbines

Most of those attending were interested to ask about the potential number of turbines, the potential height of the turbines (in comparison to the existing turbines at Fallago Rig) and where they would be located at the site.

There were some concerns as to the height (“enormity”) of the potential turbines (260 metres).

Due to the number of current / potential developments in the area one attendee, opposed to the development, described this as the “industrialisation of the Lammermuirs.”

Some questions about the reliability of wind turbines were asked.

Tourism

There was a general query about any potential impact on tourism as a result of the proposed wind farm.

General

There were three complaints that the leaflets had not arrived in time or had been too late. These individuals were invited to attend the other two remaining exhibitions or to refer to the website for more information. Contact information (in the form of business cards) and the offer of one-to-one follow up meetings were offered to two attendees opposed to wind farm developments.

Consultation Feedback – October 2022

As with the consultation exhibition series in March 2022, the topic of most interest to those who attended was the community benefit fund.

Comments from attendees were raised via the feedback forms or directly with members of the team at the consultation exhibitions or through communication via the website or from community councils.

Topics of interest included:

Longformacus (DARK BLUE)

Westruther (LIGHT BLUE)

Gifford (ORANGE)

Community Benefit

Those who attended the second series of consultation exhibitions often spent considerable time reviewing the exhibition banners before having detailed discussions with members of the team.

Community benefit was a popular topic with attendees who were keen to establish how a Dunside wind farm community fund might be administered, which areas would be eligible for support from the fund, and the purposes it could be used for.

Several discussions centred around whether funds could be used to reduce energy bills or to support rural communities with a shift from oil or LPG towards ground source heat pumps and solar.

In addition, there were questions about whether local amenities such as community woodlands, village halls etc. might be eligible to apply to a fund should the project be consented.

Wind Farm Development – General

Comments in completed feedback forms included:

“Great project. Perfect place for a wind farm. Go for higher tip heights, 250 metres +!”

“I’m pleased that our countryside can provide energy. I don’t consider wind farms spoil the views. We must accept change and needs must be met.”

“Hydrogen production from excess electricity would seem an obvious method of storage. I find turbines a reassuring reminder of no carbon power.”

One attendee was very pro wind power and anti-nuclear and expressed security risk concerns relating to nuclear.

“A significant addition to an area already densely populated by wind farms – substantial impact on local village aesthetics / views. Torn between environmental need and impact this development will have on local area.”

Turbines

There were more detailed questions at this point in the consultation process regarding the size, number and exact location of the turbines at the proposed Dunside wind farm.

Some attendees were very positive about turbines and interested in how much energy Scotland exports to England. There were questions about why electricity bills in Scotland did not reflect this.

Again, comments reflected the spectrum of opinion about wind farms and turbines. One wind farm enthusiast commented; “Ensure maximisation of turbine numbers and output. (I’m sure you’re doing that!) Continue to ‘outreach’ to local communities as much as possible.”

When asked whether they were supportive of renewable energy, one attendee commented: “Renewable, yes. Mega Turbines? Absolutely not.”

The number of current and potential wind farms in the area was raised with one attendee commenting; “Turbines are far too big. Too many wind farms already in the Borders. How many more are we to suffer in the area?”

There were some questions regarding how the turbines would be transported to the site on existing roads and through some small villages.

General

In one discussion there was concern raised regarding the potential increase in traffic through the village and the consequential impact on the local environment.

Doors Open Days Feedback

The feedback was provided via the Doors Open Days organisers.

“Visiting Fallago wind farm was a very informative experience. The event was extremely well organised and the staff at the event were very helpful and friendly. Every question was answered so visitors fully understood the function of the wind farm both strategically and operationally.”

“Visited Fallago wind farm. This was very interesting and informative. Being up close to a turbine and being able to go inside was very good. The EDF technicians and engineers gave excellent presentations, and I cannot fault the day. We even got free coffee and cake which was not expected at all.”

“I look forward to Doors Open Days every year and the opportunity to see inside somewhere new and different. This year the visit to the wind farm was an unusual and interesting venue for my whole family, a good insight into getting a better understanding of energy production and satisfying our curiosity of the wind turbines we see so often on the hills in the distance.”

“Really great to visit something that is helping climate change and that is not possible to visit otherwise. Superb hospitality and engagement with visitors.”

13. Design Responses Relevant to Public Consultation Feedback

Natural Heritage

EDF Renewables has undertaken a full environmental impact assessment for the Dunside wind farm. This includes more than two years of bird surveys as well as habitat mapping, peat investigations (depth, landslide risk assessment and peat quality), hydrology mapping as well as surveys for protected species and other ecological sensitivities. The findings of these surveys provide the basis for the subsequent wind farm layout so that areas of sensitivity can be avoided.

In addition to the embedded mitigation for avoiding environmental impacts through the design process, a substantial range of measures are proposed for biodiversity enhancement and improved habitat connectivity in the Outline Restoration and Enhancement Plan. The aim of this plan is to go beyond simply mitigating the potential effects of the proposed wind farm and to deliver biodiversity increases through measures such as re-wetting of moorland, cutting heather where it was previously burned, and extensive areas of riparian tree planting which also provides landscape benefits to the site.

Whilst the site is not overlain with deep peat, pockets of deeper peat are present in scattered locations. The mapping of peat also fed into the design for the proposed layout where the deeper areas have been avoided for turbine locations and, where tracks need to cross some areas of deeper peat, floating (rather than excavated) tracks are proposed.

Cultural Heritage

A number of important cultural heritage features are present within the Dunside site. In particular, the Mutiny Stones long-cairn, Dunside Hill cairn, and field systems relating to historic farming practices around Byrecleugh. The importance of impacts upon setting was a key design aspect in relation to these features and included the consideration of setting importance to the integrity of the features themselves and their cultural significance.

As the design developed, several turbine locations were removed from the proposals to minimise encroachment upon the setting of the Mutiny Stones and to maintain a 1km buffer for turbines located in this area. Sensitive separation has also been applied to the Dunside Hill Cairn. In doing so, extensive views

from the Mutiny Stones, down the Dye Water and across to Dunside Hill, which are likely to have been most important to the siting of the cairn, have been preserved and the closest turbines visible from the cairn are to the west where long-distance views are not experienced.

The evolution of the design process has sought to reduce the potential for impacts on heritage assets resulting from setting change. This has included a reduction in the number of turbines and their re-siting through the design process.

Landscape and Visual Considerations

Design principles were adopted at the outset of the development process and considered throughout the design:

- Avoid dense clusters of overlapping turbines
- Arrange turbines as far as possible to form an evenly spaced group or array when seen from key viewpoints
- Avoid outlying turbines or stray tips which stand apart from the rest
- Remove, relocate or amend the turbine tower height of turbines which appear more elevated than the majority in key views, and those which appear as outliers, and thus, disproportionately extend the horizontal spread of the turbines
- Design a reduced lighting scheme, which minimises landscape and visual effects associated with visible aviation lighting as far as possible. Further detail is provided in Appendix 11.1: Aviation Lighting Report.

In addition to these general principles, site-specific principles were also adopted:

- To seek to respond to the scale of the underlying landform through choice of turbine tip height and scale
- To seek to develop a turbine layout which minimises effects on the special qualities of local and more distant designated landscapes, including the Lammermuir Hills Special Landscape Area (SLA), Lammermuir Moors SLA and Eildon and Leaderfoot National Scenic Area (NSA)

- To seek to limit the visual effects of turbine proposals on sensitive receptors including residents in nearby settlements such as Westruther and properties along the Dye Water Valley
- To seek to reduce the horizontal spread of the Proposed Development, remove outlying turbines and reduce stacking, particularly in views from nearby residential properties and Twin Law Cairns on the Southern Upland Way
- To seek to reduce visual effects at the closest residential properties within the Site which have views of the turbines by applying a minimum 1.2 km buffer around turbines
- To make use of natural topographical screening of turbines and other infrastructure in key views where possible such as views from the settled East Lothian farmland to the north of the Lammermuir Hills
- To identify an aviation lighting scheme which both satisfies the requirements of aviation policy and minimises the visual effects of such lighting at nearby receptors. A reduced lighting scheme has been agreed with the Civil Aviation Authority

The nature of wind turbines as tall, modern structures means that the form of the proposed wind farm as a whole is important, and a clear design strategy is necessary. The overall aim of the design strategy was to create a wind farm with a cohesive design that is sympathetic in form and scale to the surrounding landscape context, whilst achieving an appropriate balance between maximising renewable energy yield and minimising other environmental, community and technical effects.

The careful design of the layout of the proposed turbines and associated infrastructure, and the reduction in the number of turbines from 20 (Layout 1) to 15 (Layout 13), has resulted in the avoidance or reduction of a number of potentially significant landscape and visual effects. Overall, as a result of the iterative design approach, the adverse effects of the Proposed Development have been minimised as far as is reasonably practicable. It is considered that the Proposed Development is the optimal layout for the site taking cognisance of the key environmental constraints in the design process while ensuring that electrical output is maintained for a commercially viable project.

Wellbeing

The principal concern for health effects arising from a wind farm is its potential to introduce disturbing levels of noise at residential properties. The wind farm has been designed to ensure that the noise standards applied to wind farms throughout Scotland can be met. These standards are set to ensure that levels of noise emitted by the wind farm are not at a level that is likely to cause disturbance to residents and considers a range of wind speeds, directions and surrounding topography.

Recreation

The period when there is greatest potential to impact upon recreational access to the wind farm area is during its construction. Once operational, recreational access would not be restricted. Indirect effects will be the landscape impact upon visitors in some locations which will be perceived differently depending upon the individual. Several visitors to the Dunside exhibitions mentioned that they mountain bike at the operational Fallago Rig wind farm and the tracks created for Dunside would provide the same opportunity to explore by bike.

In recognition of the higher user numbers of the most established recreational routes, proposals have been included to provide safe segregated footpaths for users of the Southern Upland Way and the Herring Road during construction where these paths are shared by the Fallago Rig access road.

Construction traffic on the existing Fallago Rig access road will be subject to a strict speed limit and is unlikely to cause a hazard to recreational users elsewhere except during the periods of turbine delivery where the full width of the road will be required by the vehicles. An Outline Access Management Plan is included in the EIA Report and would be developed further in advance of any construction activities taking place.

Community Benefits

Whilst community benefits are not specifically a design consideration, they were a frequent topic of enquiry in the consultation process. A community benefit fund will be provided if the project becomes operational, in line with Scottish Government guidance, currently set at £5000 per MW. The form of administration for the fund would be decided in consultation with local communities in the Scottish Borders and East Lothian in advance of it being established.

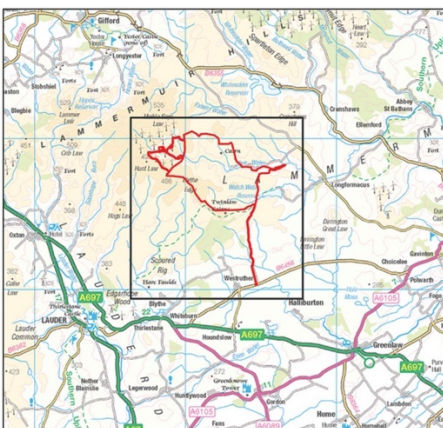
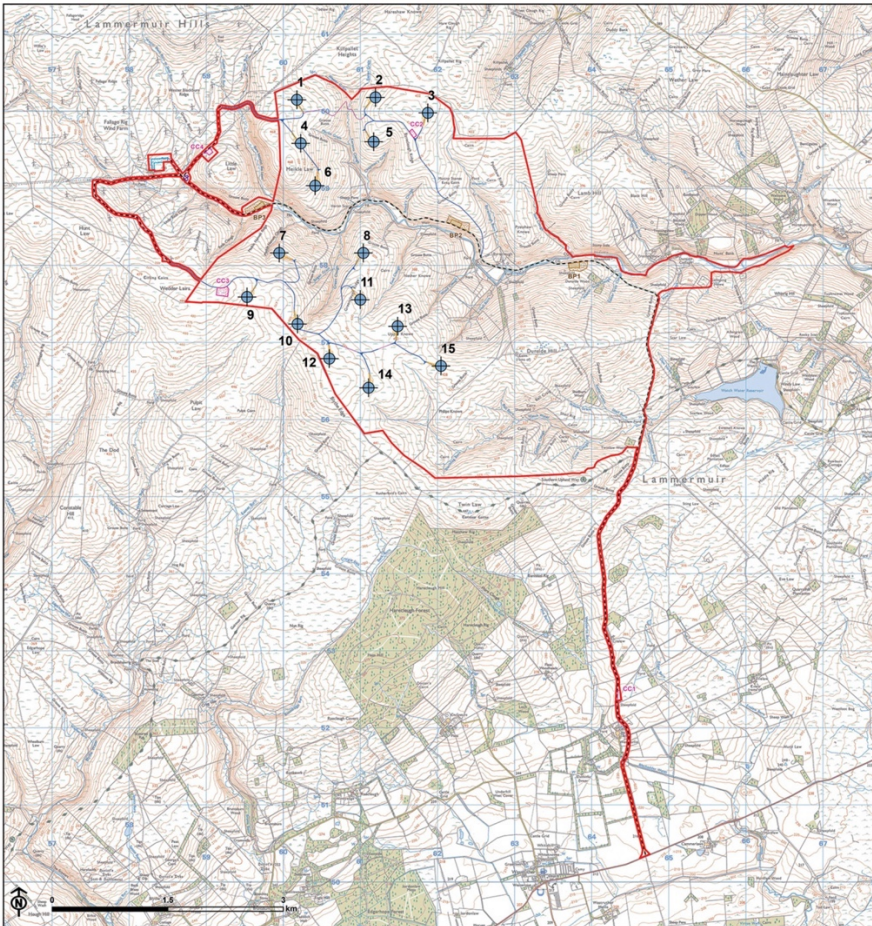
EDF Renewables
Dunside wind farm
Pre-application Consultation Report

Appendices :



Appendix 1

Dunside wind farm Site Location Map:



Proposed Site Layout



- Turbine
- Site Boundary
- Substation extension
- Construction compound
- Existing construction compound
- Borrow pit
- Borrow pit search area
- Temporary hardstanding
- Permanent hardstanding
- Battery storage
- Proposed new track (floating)
- Proposed new track
- Proposed light vehicle track (3m wide)
- Proposed existing track upgrade
- Existing track

Appendix 2

Dunside wind farm Press Adverts:

Dunside wind farm :
Public Exhibitions



Come and see for yourself!

EDF Renewables UK is preparing plans for a proposed new wind farm, called Dunside, in the Lammermuir Hills.

We are inviting anyone who is interested to attend one of our upcoming public exhibitions:

- **Tuesday 25th October 2022 (3.00pm – 7.00pm)**
Longformacus Village Hall, Longformacus, Duns, TD11 3PB
- **Wednesday 26th October 2022 (3.00pm – 7.00pm)**
Gifford Village Hall, Gifford, Haddington, EH41 4QJ
- **Thursday 27th October 2022 (3.00pm – 7.00pm)**
Westruther Village Hall, Westruther, Gordon, TD3 6NE

This is your chance to see the initial design, including visualisations, of the wind farm. Visitors will be able to find out about the environmental surveys and assessments which have been happening on the proposed site. The initial layout considers feedback already received from the local community and encompasses key environmental and technical considerations, including any potential effects on landscape, ecology and the cultural heritage.

If you cannot attend the exhibitions but have questions for the project team, please contact us using the details below. The exhibition material will also be available to download from the project website after the events.

Email: info@dunsidewindfarm.co.uk
 Website: www.dunsidewindfarm.co.uk
 Post: EDF Renewables UK, Atria One, Level Seven,
 144 Morrison Street, Edinburgh, EH3 8EX



OCTOBER 2022

Dunside wind farm :
Public Exhibitions



Come and see for yourself!

You are invited to the Dunside wind farm public exhibitions in June.

EDF Renewables UK will be submitting an application to the Scottish Government in the coming weeks for Dunside wind farm, located in the Lammermuir Hills.

We are inviting anyone who is interested to attend one of our upcoming public exhibitions:

- **Tuesday 20 June 2023 (3pm – 7pm)** Westruther Village Hall, Westruther, Gordon TD3 6NE
- **Wednesday 21 June 2023 (3pm – 7pm)** Gifford Village Hall, Gifford, Haddington EH41 4QJ
- **Thursday 22 June 2023 (3pm – 7pm)** Longformacus Village Hall, Longformacus, Duns TD11 3PB

Visitors to the exhibitions will be able to see visualisations of how the site would look if the project progresses alongside the chance of asking questions directly to the project team.

From the beginning of the project, EDF Renewables UK has been committed to listening to the local community and stakeholders and to incorporating local knowledge and perspectives into the proposed plans for Dunside wind farm. The responses received at previous exhibitions and sent via our website have also been used to inform the final design of the proposed wind farm.

If you are unable to attend the exhibitions you can still contact us using the details below. All of the exhibition materials will be available to download from the project website after the exhibitions have finished.

Email: info@dunsidewindfarm.co.uk
 Website: www.dunsidewindfarm.co.uk
 Post: FAO Ruth Shewan, EDF Renewables UK, Atria One,
 Level Seven, 144 Morrison Street, Edinburgh, EH3 8EX



JUNE 2023

Appendix 3

Dunside wind farm Public Exhibition Leaflets:

Dunside Wind Farm
Public Exhibitions





Dear Resident,


EDF Renewables UK is exploring the potential for a new wind farm, called Dunside, in the Lammermuir Hills within the land of Roxburghe Estates. It is envisaged that a wind farm of up to 100 MW may be suitable for this location.

It is important that we hear from local residents early in the development of the wind farm so that we can incorporate your ideas and feedback into the final proposal next year.

We're inviting all interested parties to attend one of our upcoming public exhibitions:

- **Wednesday 16th March 2022 (4.00pm-8.00pm) - Longformacus Village Hall, Longformacus, Duns, TD11 3PB**
- **Thursday 17th March 2022 (4.00pm-8.00pm) - Westruther Village Hall, Westruther, Gordon, TD3 6NE**
- **Thursday 24th March 2022 (2.00pm-6.00pm) - Gifford Village Hall, Gifford, Haddington, EH41 4QJ**

Development overview



Our project team will be on hand to answer any questions you may have and your perspective, local knowledge and opinion is very much welcomed and will be used to inform our proposals.

Over the course of this year, a variety of specialists will carry out detailed studies to inform the design of the potential wind farm.

Further exhibitions will be held later in the year to provide detail on the findings of the studies, and to give the local community opportunities to provide feedback as the proposals evolve.


The exhibition materials will also be made available on the project website.

If you not wish to attend one of the exhibitions in person, but have questions for the project team, please contact us using the details below.

EMAIL: info@dunsidewindfarm.co.uk

WEBSITE: www.dunsidewindfarm.co.uk

POST: EDF Renewables UK, Atria One, Level Seven, 144 Morrison Street, Edinburgh, EH3 8EX



MARCH 2022

Appendix 3

Dunside wind farm **Public Exhibition Leaflets:**

Dunside wind farm : 
Public Exhibitions



Dear Resident,

EDF Renewables UK is preparing plans for a proposed new wind farm, called Dunside, in the Lammermuir Hills.

We are inviting anyone who is interested to attend one of our upcoming public exhibitions:

- **Tuesday 25th October 2022 (3.00pm - 7.00pm)**
Longformacus Village Hall, Longformacus, Duns, TD11 3PB
- **Wednesday 26th October 2022 (3.00pm - 7.00pm)**
Gifford Village Hall, Gifford, Haddington, EH41 4QJ
- **Thursday 27th October 2022 (3.00pm - 7.00pm)**
Westruther Village Hall, Westruther, Gordon, TD3 6NE

Dunside
wind farm 

Dunside wind farm : 
Public Exhibitions



This is your chance to see the initial design, including visualisations, of the wind farm. Visitors will be able to find out about the environmental surveys and assessments which have been happening on the proposed site. The initial layout considers feedback already received from the local community and encompasses key environmental and technical considerations, including any potential effects on landscape, ecology and the cultural heritage.

Members of the EDF Renewables UK project team will be on hand to answer questions and discuss the current design. We value feedback from the local community so come along and share your local knowledge and perspective on the project. As with the previous events, the comments and responses of all visitors will be used to inform the ongoing design of our proposals.

If you cannot attend the exhibitions but have questions for the project team, please contact us using the details below. The exhibition material will also be available to download from the project website after the events.

Email: info@dunsidewindfarm.co.uk
Website: www.dunsidewindfarm.co.uk
Post: EDF Renewables UK, Atria One, Level Seven,
144 Morrison Street, Edinburgh, EH3 8EX

OCTOBER 2022

Appendix 3

Dunside wind farm **Public Exhibition Leaflets:**

Dunside wind farm : edf renewables
Public Exhibitions

Following a series of public exhibitions last year we wanted to update you on our application for Dunside wind farm.

This month we are submitting an application to the Scottish Government for the wind farm, located in the Lammermuir Hills.



The proposed Dunside wind farm is approximately one kilometre east of the existing Fallago Rig wind farm enabling the use of its existing access infrastructure and grid connection. If consented, the proposed wind farm would generate around 108MW of low carbon electricity, enough to power up to 62,600* homes. It would also provide significant funds to be invested in community groups and initiatives within the local area.

We are inviting anyone who is interested to attend one of our upcoming public exhibitions:

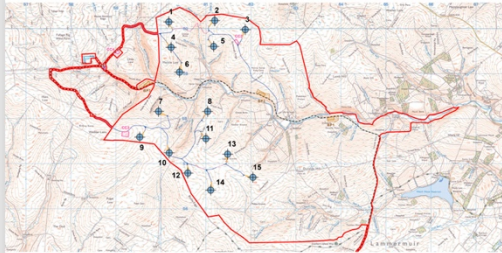
- **Tuesday 20 June (3pm – 7pm):** Westruther Village Hall, Westruther, Gordon TD3 6NE
- **Wednesday 21 June (3pm – 7pm):** Gifford Village Hall, Gifford, Haddington EH41 4QJ
- **Thursday 22 June (3pm – 7pm):** Longformacus Village Hall, Longformacus, Duns TD11 3PB

Dunside
wind farm

edf
renewables

* Local factors based on the five year rolling averages on unchanged configuration basis using factor 6.5 of Digest of UK Energy Statistics – latest figures as per July 2022 release

Dunside wind farm : edf renewables
Public Exhibitions



This is your chance to see the final design work, environmental surveys and assessments for the Dunside wind farm application. Visitors to the exhibitions will be able to see visualisations of how the site would look if the project progresses alongside the chance of asking questions directly to the project team.

From the beginning of the project, EDF Renewables UK has been committed to listening to the local community and stakeholders and to incorporating local knowledge and perspectives into the proposed plans for Dunside wind farm. The comments and responses from visitors to our previous exhibitions and received through our website and digital channels have helped to inform the final design of the proposed Dunside wind farm.

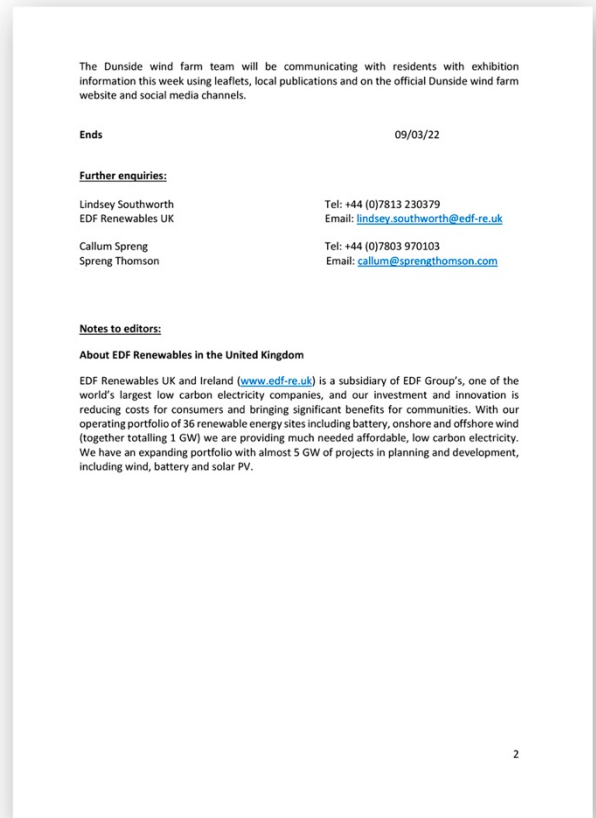
If you cannot attend the exhibitions you can still contact us using the details below. All of the exhibition materials will be available to view or download from the project website after the events.

Email: info@dunsidewindfarm.co.uk
 Website: www.dunsidewindfarm.co.uk
 Post: **FAO Ruth Shewan, EDF Renewables UK, Atria One, Level Seven, 144 Morrison Street, Edinburgh, EH3 8EX**

JUNE 2023

Appendix 4

Dunside wind farm Press Releases 2022 – 2023:



MARCH 2022

Appendix 4

Dunside wind farm Press Releases 2022 – 2023:



Monday, 17th October 2022

Longformacus, Gifford & Westruther to host second series of exhibitions on proposed wind farm

EDF Renewables UK is following its first round of exhibitions earlier this year with more public events in the Scottish Borders about the progress of plans for a new wind farm. The three exhibitions will take place in Longformacus, Gifford and Westruther.

With a proposed location in the Lammermuir Hills, Dunside wind farm, once completed, could generate around 100MW of low carbon electricity alongside significant funds to be invested in projects throughout the Scottish Borders.

The second round of public exhibitions will provide the latest information about the further design work and environmental investigations EDF Renewables UK has carried out since the first exhibitions.

With drawings and visualisations at the events, visitors can find out about the environmental surveys and assessments which have been undertaken on the proposed site. Members of the project team from EDF Renewables UK will be on hand to answer any questions that visitors may have.

Richard Fisher, Development Project Manager at EDF Renewables UK & Ireland, said:

"We really welcome feedback from the local community and hope that as many people as possible can attend one of these events.

"By listening to and incorporating local knowledge and perspectives into our proposed plans for Dunside wind farm, we can ensure that the project will make a lasting and valuable contribution to the Scottish Borders. As with our previous public events, the comments and responses of all visitors are used to inform the next stage of our proposals."

EDF Renewables UK public exhibitions October 2022

Tuesday 25th Oct. 3pm - 7pm: Longformacus Village Hall, Longformacus, Duns TD11 3PB

Wednesday 26th Oct. 3pm - 7pm: Gifford Village Hall, Gifford, Haddington EH41 4QJ

Thursday 27th Oct. 3pm - 7pm: Westruther Village Hall, Westruther, Gordon TD3 6NE

1

Local residents who cannot attend the exhibitions, but have questions for the project team, can still contact the team by using the details below.

Ends

Email: info@dunsidewindfarm.co.uk **Website:** www.dunsidewindfarm.co.uk
Post: EDF Renewables UK, Atria One, Level Seven, 144 Morrison Street, Edinburgh, EH3 8EX

Further enquiries:
 Lindsey Southworth
 EDF Renewables UK

Tel: +44 (0)7813 230379
Email: lindsey.southworth@edf-re.uk

Lisa McGrath
 Spreng Thomson

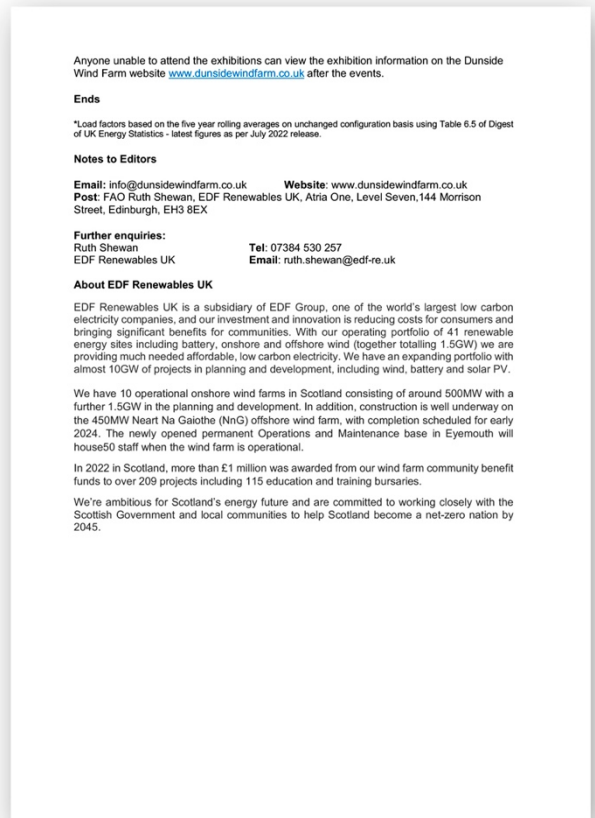
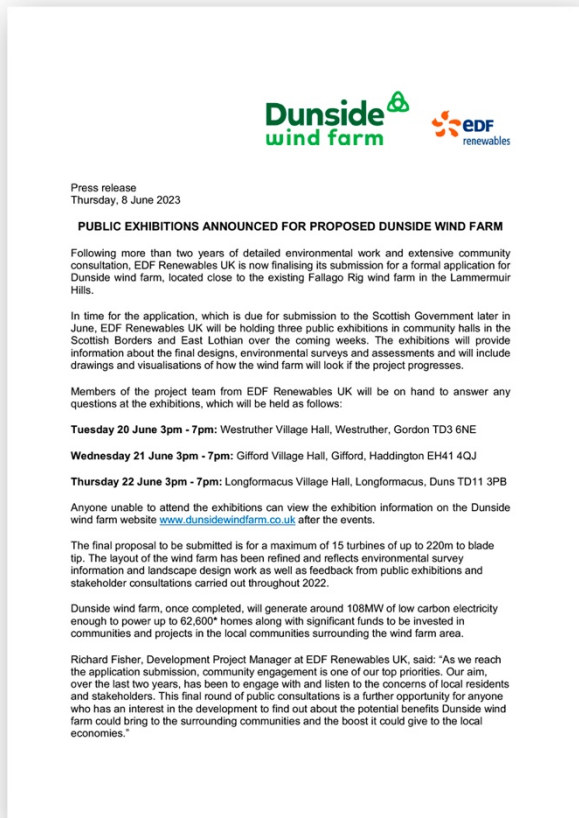
Tel: +44 (0)7809 735 942
Email: lisa@sprenghthomson.com

2

OCTOBER 2022

Appendix 4

Dunside wind farm Press Releases 2022 – 2023:



JUNE 2023

Appendix 5

Dunside wind farm Feedback Form:



**Have Your Say: Dunside Wind Farm Scoping Consultation – ON THE DAY
FEEDBACK FROM LONGFORMACUS CONSULTATION EVENT**

EDF Renewables UK would like to hear your views on the potential new wind farm, called Dunside, in the Lammemuir Hills.

If you'd like to submit this feedback form online, please visit www.dunsidewindfarm.co.uk or alternatively, email info@dunsidewindfarm.co.uk.

There is no obligation to answer all or any of these questions. Any feedback is appreciated.

1. The exhibition	<i>Please tick</i>	
Where did you find out about the exhibition?	Advert <input type="checkbox"/>	Website <input type="checkbox"/>
	Letter <input type="checkbox"/>	Newspaper <input type="checkbox"/>
		Online article <input type="checkbox"/>
		Other <input type="checkbox"/>
Were you already aware of the potential new wind farm?	Yes <input type="checkbox"/>	No <input type="checkbox"/>
Has the exhibition been useful?	Yes <input type="checkbox"/>	No <input type="checkbox"/>
If not, please explain why?		
2. About yourself	<i>Please tick</i>	
Do you live nearby?	Yes <input type="checkbox"/>	No <input type="checkbox"/>
If you're a resident please provide your postcode:		
Are you here as a representative of any organisation or group?	Yes <input type="checkbox"/>	No <input type="checkbox"/>
If so, which organisation?		
N/A		
How old are you?	Under 20 <input type="checkbox"/>	40-49 <input type="checkbox"/>
	20-29 <input type="checkbox"/>	50-59 <input type="checkbox"/>
	30-39 <input type="checkbox"/>	60+ <input type="checkbox"/>

3. The project	Yes	No	Unsure
Are you concerned about the potential effects of climate change?	<input type="checkbox"/>	<input type="checkbox"/>	<input type="checkbox"/>
Do you support the generation of renewable energy in Scotland?	<input type="checkbox"/>	<input type="checkbox"/>	<input type="checkbox"/>
Do you support the development of onshore wind farms in Scotland?	<input type="checkbox"/>	<input type="checkbox"/>	<input type="checkbox"/>
Are you supportive of the potential plans for Dunside wind farm?	<input type="checkbox"/>	<input type="checkbox"/>	<input type="checkbox"/>

Appendix 6

Dunside wind farm Social Media Posts 2022 – 2023:

Dunside Wind Farm
9 March 2022


A series of exhibitions for a potential new wind farm called Dunside, in the Lammermuir Hills in Berwickshire, will be held by EDF Renewables UK as it seeks feedback from local communities. A scoping process, to determine the content of an environmental impact assessment (EIA) in support of a potential future planning application is currently under way for the scheme, which would potentially be located on land owned by Roxburghe Estates.

Exhibitions will take place at the following times and locations:

- Wednesday 16th March 2022 (4.00pm – 8.00pm) – Longformacus Village Hall, Longformacus, Duns, TD11 3PB
- Thursday 17th March 2022 (4.00pm – 8.00pm) – Westruther Village Hall, Westruther, Gordon, TD3 6NE
- Thursday 24th March 2022 (2.00pm – 6.00pm) – Gifford Village Hall, Gifford, Haddington, EH41 4QJ

Find out more here.

#renewableenergy #renewables #greenenergy #scottishborders #scotland



DUNSIDEWINDFARM.CO.UK
Local communities invited to exhibitions on potential wind farm in Scottish Borders - Dunside Wind Farm


Dunside Wind Farm
30 March 2022

The team behind the Dunside wind farm proposal recently visited the villages of Longformacus and Westruther in the Scottish Borders and Gifford in East Lothian to host public exhibitions for local people.

Residents who attended the events were able to talk to staff from EDF Renewables and LUC (an environmental planning, design and management firm) to find out more about the proposed development in the Lammermuir Hills.

Read more here.

#onshorewind #onshorewindfarm #greenenergy #scotland



DUNSIDEWINDFARM.CO.UK
Public exhibitions on Dunside wind farm proposal held in local communities - Dunside Wind Farm

Dunside Wind Farm
16 May 2022

Last week, Rachael Hamilton MSP met with members of the EDF Renewables UK team at the site for the potential Dunside Wind Farm.

Set in the Lammermuir Hills, the site is currently the subject of an extensive scoping study. Once scoping work has been completed, a second series of public exhibitions will be held where more details about the proposals will be shared.

Our thanks to Rachael Hamilton – whose constituency encompasses the proposed site – for meeting with us to discuss our plans in more detail.

Left to right in photo: Sarah Dooley and Richard Fisher of EDF Renewables; Rachael Hamilton MSP; and Liam Haig of EDF Renewables.

#renewableenergy #windfarm #sitevisit #scotland



Dunside Wind Farm
17 October 2022

Latest news: Longformacus, Gifford & Westruther to host second series of exhibitions on proposed wind farm.


EDF Renewables UK & Ireland is following its first round of exhibitions earlier this year with more public events in the Scottish Borders about the progress of plans for a new wind farm. The three exhibitions will take place in Longformacus, Gifford and Westruther.

With a proposed location in the Lammermuir Hills, Dunside wind farm, once completed, could generate around 100MW of low carbon electricity alongside significant funds to be invested in projects throughout the Scottish Borders.

The second round of public exhibitions will provide the latest information about the further design work and environmental investigations EDF Renewables UK has carried out since the first exhibitions.

Read more below.

#renewables #renewableenergy #onshorewind #scotland



DUNSIDEWINDFARM.CO.UK
Longformacus, Gifford & Westruther to host second series of exhibitions on proposed wind farm - Dunside Wind Farm

Appendix 6

Dunside wind farm Social Media Posts 2022 – 2023:

Dunside Wind Farm
54 followers
1yr • Edited •

A series of exhibitions for a potential new wind farm called Dunside, in the Lammermuir Hills in Berwickshire, will be held by [EDF Renewables UK & Ireland](#) as it seeks feedback from local communities.


A scoping process, to determine the content of an environmental impact assessment (EIA) in support of a potential future planning application is currently under way for the scheme, which would potentially be located on land owned by Roxburghe Estates.

Exhibitions will take place at the following times and locations:

- Wednesday 16th March 2022 (4.00pm – 8.00pm) – Longformacus Village Hall, Longformacus, Duns, TD11 3PB
- Thursday 17th March 2022 (4.00pm – 8.00pm) – Westruther Village Hall, Westruther, Gordon, TD3 6NE
- Thursday 24th March 2022 (2.00pm – 6.00pm) – Gifford Village Hall, Gifford, Haddington, EH41 4QJ

Find out more here.

[#renewableenergy](#) [#renewables](#) [#greenenergy](#) [#scottishborders](#) [#scotland](#)



Local communities invited to exhibitions on potential wind farm in Scottish Borders - Dunside Wind Farm
dunsidewindfarm.co.uk • 1 min read

Like Comment Repost Send


Dunside Wind Farm
54 followers
1yr •

The team behind the Dunside wind farm proposal recently visited the villages of Longformacus and Westruther in the Scottish Borders and Gifford in East Lothian to host public exhibitions for local people.

Residents who attended the events were able to talk to staff from [EDF Renewables UK & Ireland](#) and LUC (an environmental planning, design and management firm) to find out more about the proposed development in the Lammermuir Hills.

Read more here.

[#onshorewind](#) [#onshorewindfarm](#) [#greenenergy](#) [#scotland](#)



Public exhibitions on Dunside wind farm proposal held in local communities - Dunside Wind Farm
dunsidewindfarm.co.uk • 1 min read

1 repost

Dunside Wind Farm
54 followers
3d •

EDF Renewables UK is finalising its submission for a formal application to the Scottish Government for Dunside wind farm located in the Lammermuir Hills. Westruther, Longformacus and Gifford will host a series of exhibitions about this. EDF Renewables UK is committed to working closely with the Scottish Government and local communities to help Scotland become a net-zero nation by 2045.

Find out more about the exhibitions here: <https://lnkd.in/eCVBrS5>

Public exhibitions announced for proposed Dunside wind farm - Dunside Wind Farm
dunsidewindfarm.co.uk • 2 min read

Following more than two years of detailed environmental work and extensive community consultati...

Dunside Wind Farm
9 June at 11:38

EDF Renewables UK is finalising its submission for a formal application to the Scottish Government for Dunside wind farm located in the Lammermuir Hills. Westruther, Longformacus and Gifford will host a series of exhibitions about this. EDF Renewables UK is committed to working closely with the Scottish Government and local communities to help Scotland become a net-zero nation by 2045.

Find out more about the exhibitions here:

Public exhibitions announced for proposed Dunside wind farm - Dunside Wind Farm
DUNSIDEWINDFARM.CO.UK
Following more than two years of detailed environmental work and extensive community consultation, EDF Renewables UK is now finalising its submission for a formal application for Dunside wind farm, located close to...

Appendix 7

Dunside wind farm Media Coverage 2022 – 2023:



EDF Renewables UK is exploring the potential to create a new 100MW wind farm called Dunside on moorland in the Lammermuir Hills in Berwickshire, Scotland.

Surveys and assessments, to be undertaken during 2022, will examine the potential to develop the project, which is also expected to create significant investment in community projects across the local area.

A scoping process, to determine the content of an environmental impact assessment (EIA) in support of any future planning application, has been launched by, for the potential scheme site on land owned by Roxburgh Estates.

The proposed site of Dunside is approximately 1km east of the existing Fallago Rig wind farm, enabling use of the existing access infrastructure and grid connection, said EDF.

Up to 20 turbines, each with a tip height of up to 260 metres, will be considered for scoping the EIA.

The final design will take account of feedback from local people and others and the environmental information gathered for the EIA.

Should the wind farm proceed, it would make an important contribution to helping Scotland achieve its 2045 net zero target and, at the same time, support the Scottish economy by increasing the country's supply of green energy.

The wind farm could generate enough low carbon electricity to power around 60,000 homes.

Based on the Scottish Government guidelines, EDF Renewables UK would generate an annual fund of £5,000 (£6,003) per MW for investment in community projects for the Scottish Borders.

EDF Renewables UK will soon embark on an extensive consultation exercise with local communities, it said.

Subject to meeting relevant COVID 19 restrictions that may prevail, the Dunside Wind Farm project team hopes to stage a number of face-to-face events at local venues later this month in order to outline the plans and listen to the views of local people.

EDF Renewables UK principal project development manager Sarah Dooley said: "Dunside wind farm has the potential to make a lasting and valuable contribution to the Scottish Borders, generating clean, green energy, empowering local communities; and supporting Scotland's net zero carbon targets.

"We look forward to sharing our plans with local communities at our consultation events later this month."

MARCH 2022



A scoping application document has been submitted to [Scottish Borders Council](#) for the development on land west of Dunside at Longformacus in Duns.

The application for the Dunside Wind Farm comes from Wearside-based EDF Energy Renewables Ltd and would incorporate turbines with maximum tip heights of 260m.

The site in the Lammermuir Hills is owned by Roxburgh Estates and is 1km east of the existing Fallago Rig Wind Farm, enabling use of the existing access infrastructure and grid connection.

EDF say that should the development proceed, it would "make an important contribution to helping [Scotland](#) achieve its 2045 net zero target and, at the same time, support the Scottish economy by increasing Scotland's supply of green energy."

The wind farm would generate enough low carbon energy to power 60,000 homes, it is asserted.

Sarah Dooley, principal project manager at EDF Renewables UK, said: "Dunside Wind Farm has the potential to make a lasting and valuable contribution to the Scottish Borders, generating clean, green energy; empowering local communities and supporting Scotland's net zero carbon targets.

"We look forward to sharing our plans with local communities at our consultation events."

A scoping report notes: "There are a number of operational and proposed wind farms in the vicinity, most notably Fallago Rig, which abuts the western boundary of the site, the very extensive Crystal Rig and Aikengall schemes to the north east, and Dun Law straddling the A68."

Appendix 7


Dunside wind farm Media Coverage 2022 – 2023:

Border Telegraph [Subscribe](#) [Puzzles](#)

News Sport Announcements What's on YourSay Business More

Galashiels Selkirk Lariston Jedburgh Kelso Hawick Melrose Peebles Borders

Plans made for 20 turbine Berwickshire wind farm
19th March



The turbines will have maximum tip heights of 260m. Photo: Archive

By Paul Kelly
Local democracy reporter

Share Comments

A MAJOR new 20 turbine windfarm in Berwickshire which would generate 100 megawatts of green energy has been placed on the planning agenda.

A scoping application document has been submitted to Scottish Borders Council for the development on land west of Dunside at Longformacus in Duns.

The application for the Dunside Wind Farm comes from Wearside-based EDF Energy Renewables Ltd and would incorporate turbines with maximum tip heights of 260m.

The site of the proposed development is located within the Lammermuir Hills on an upland area of gently undulating moorland dominated by heather.

The site is owned by Roxburghe Estates and is 1km east of the existing Fallago Rig Wind Farm, enabling use of the existing access infrastructure and grid connection.

EDF say that should the development proceed, it would "make an important contribution to helping Scotland achieve its 2045 net zero target and, at the same time, support the Scottish economy by increasing Scotland's supply of green energy."

The wind farm would generate enough low carbon energy to power 60,000 homes, it is asserted.

Sarah Dooley, principal project manager at EDF Renewables UK, said: "Dunside Wind Farm has the potential to make a lasting and valuable contribution to the Scottish Borders, generating clean, green energy; empowering local communities and supporting Scotland's net zero carbon targets."

"We look forward to sharing our plans with local communities at our consultation events."

A scoping report submitted to the council highlights the remoteness of the proposed wind farm's location.

It says: "The site lies within the Lammermuir Hills and despite its relative proximity to Edinburgh and the settled coastal plain of East Lothian, it is an area which feels comparatively remote, with few major roads and no significant settlement."

"There are a number of operational and proposed wind farms in the vicinity, most notably Fallago Rig, which abuts the western boundary of the site, the very extensive Crystal Rig and Aikengall schemes to the north east, and Dun Law straddling the A68."

MARCH 2022

Energy Live News


MENU

Efficiency & Environment

EDF Renewables unveils new Scottish wind farm plan
The project is forecast to generate up to 100MWh

Big Zero Report 2022 **Dimitris Mavrokefalidis**
[More Articles](#)
Thursday 3 March 2022

 [OPEN OUR REPORT](#)



EDF Burnfoot and Rhodders Image: Peter Devlin

EDF Renewables has unveiled plans for the development of a new wind farm in the Lammermuir Hills in Berwickshire, in southeastern Scotland.

The project is expected to feature 20 wind turbines, each with a tip height of up to 260 metres.

The wind farm is predicted to generate up to 100MWh, enough to power 60,000 homes.

A scoping process to determine the content of an environmental impact assessment in support of any future planning application has been launched.

Sarah Dooley, Principal Project Development Manager at EDF Renewables UK, said: "Dunside wind farm has the potential to make a lasting and valuable contribution to the Scottish Borders, generating clean, green energy; empowering local communities; and supporting Scotland's net zero carbon targets."

If you enjoyed this story you can sign up to our weekly email for Energy Live News – and if you're interested in hearing more about the journey to net zero by 2050, you can also sign up to the future Net Zero newsletter.

climate change edf renewables energy transition Low Carbon onshore wind power generation Renewable energy Renewables wind energy wind farm

Appendix 7

Dunside wind farm Media Coverage 2022 – 2023:

Peeblesshire News


News Sport Opinion What's on More

Peebles Innerleithen Walkerburn West Linton Biggar Borders

Public invited to attend Lammermuir Hills wind farm exhibitions

19th October
By John Hislop
Reporter

0 Comments



EDF Renewables UK is following its first round of exhibitions earlier this year with more public events in the Scottish Borders about the progress of plans for a new wind farm.

The three exhibitions will take place in Longformacus, Gifford and Westruther.

With a proposed location in the Lammermuir Hills, Dunside wind farm, once completed, could generate around 100MW of low carbon electricity alongside significant funds to be invested in projects throughout the Scottish Borders.

The second round of public exhibitions will provide the latest information about the further design work and environmental investigations EDF Renewables UK has carried out since the first exhibitions.

With drawings and visualisations at the events, visitors can find out about the environmental surveys and assessments which have been undertaken on the proposed site. Members of the project team from EDF Renewables UK will be on hand to answer any questions that visitors may have.

Richard Fisher, Development Project Manager at EDF Renewables UK & Ireland, said:

"We really welcome feedback from the local community and hope that as many people as possible can attend one of these events.

"By listening to and incorporating local knowledge and perspectives into our proposed plans for Dunside wind farm, we can ensure that the project will make a lasting and valuable contribution to the Scottish Borders. As with our previous public events, the comments and responses of all visitors are used to inform the next stage of our proposals."

EDF Renewables UK public exhibitions October 2022

Tuesday 25th Oct. 3pm - 7pm: Longformacus Village Hall, Longformacus, Duns TD11 3PB

Wednesday 26th Oct. 3pm - 7pm: Gifford Village Hall, Gifford, Haddington EH41 4QJ

Thursday 27th Oct. 3pm - 7pm: Westruther Village Hall, Westruther, Gordon TD3 6NE

Local residents who cannot attend the exhibitions, but have questions for the project team, can still contact the team by using the details below.

Email: info@dunsidewindfarm.co.uk Website: www.dunsidewindfarm.co.uk Post: EDF Renewables UK, Atria One, Level Seven, 144 Morrison Street, Edinburgh, EH3 8EX

Border Telegraph

Subscribe Puzz


News Sport Announcements What's on YourSay

Galashiels Selkirk Earliston Jedburgh Kelso Hawick Melrose

Public invited to attend Lammermuir Hills wind farm exhibitions

19th October
By John Hislop
Reporter

0 Comments



EDF Renewables UK is following its first round of exhibitions earlier this year with more public events in the Scottish Borders about the progress of plans for a new wind farm.

The three exhibitions will take place in Longformacus, Gifford and Westruther.

With a proposed location in the Lammermuir Hills, Dunside wind farm, once completed, could generate around 100MW of low carbon electricity alongside significant funds to be invested in projects throughout the Scottish Borders.

The second round of public exhibitions will provide the latest information about the further design work and environmental investigations EDF Renewables UK has carried out since the first exhibitions.

With drawings and visualisations at the events, visitors can find out about the environmental surveys and assessments which have been undertaken on the proposed site. Members of the project team from EDF Renewables UK will be on hand to answer any questions that visitors may have.

Richard Fisher, Development Project Manager at EDF Renewables UK & Ireland, said:

"We really welcome feedback from the local community and hope that as many people as possible can attend one of these events.

"By listening to and incorporating local knowledge and perspectives into our proposed plans for Dunside wind farm, we can ensure that the project will make a lasting and valuable contribution to the Scottish Borders. As with our previous public events, the comments and responses of all visitors are used to inform the next stage of our proposals."

EDF Renewables UK public exhibitions October 2022

Tuesday 25th Oct. 3pm - 7pm: Longformacus Village Hall, Longformacus, Duns TD11 3PB

Wednesday 26th Oct. 3pm - 7pm: Gifford Village Hall, Gifford, Haddington EH41 4QJ

Thursday 27th Oct. 3pm - 7pm: Westruther Village Hall, Westruther, Gordon TD3 6NE

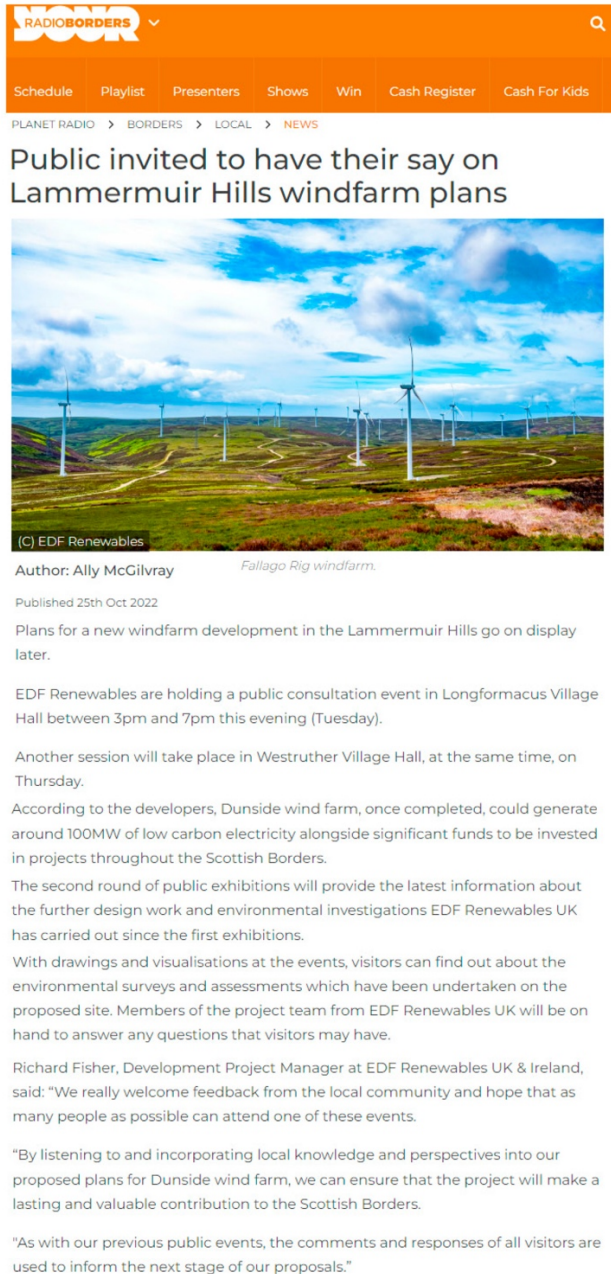
Local residents who cannot attend the exhibitions, but have questions for the project team, can still contact the team by using the details below.

Email: info@dunsidewindfarm.co.uk Website: www.dunsidewindfarm.co.uk Post: EDF Renewables UK, Atria One, Level Seven, 144 Morrison Street, Edinburgh, EH3 8EX

OCTOBER 2022

Appendix 7

Dunside wind farm Media Coverage 2022 – 2023:




RADIO BORDERS

Schedule Playlist Presenters Shows Win Cash Register Cash For Kids

PLANET RADIO > BORDERS > LOCAL > NEWS

Public invited to have their say on Lammermuir Hills windfarm plans



(C) EDF Renewables

Author: Ally McGilvray *Fallago Rig windfarm.*

Published 25th Oct 2022

Plans for a new windfarm development in the Lammermuir Hills go on display later.

EDF Renewables are holding a public consultation event in Longformacus Village Hall between 3pm and 7pm this evening (Tuesday).

Another session will take place in Westruther Village Hall, at the same time, on Thursday.

According to the developers, Dunside wind farm, once completed, could generate around 100MW of low carbon electricity alongside significant funds to be invested in projects throughout the Scottish Borders.

The second round of public exhibitions will provide the latest information about the further design work and environmental investigations EDF Renewables UK has carried out since the first exhibitions.

With drawings and visualisations at the events, visitors can find out about the environmental surveys and assessments which have been undertaken on the proposed site. Members of the project team from EDF Renewables UK will be on hand to answer any questions that visitors may have.

Richard Fisher, Development Project Manager at EDF Renewables UK & Ireland, said: "We really welcome feedback from the local community and hope that as many people as possible can attend one of these events.

"By listening to and incorporating local knowledge and perspectives into our proposed plans for Dunside wind farm, we can ensure that the project will make a lasting and valuable contribution to the Scottish Borders.

"As with our previous public events, the comments and responses of all visitors are used to inform the next stage of our proposals."

OCTOBER 2022

Appendix 7

Dunside wind farm Media Coverage 2022 – 2023:

Peeblesshire News

News Sport Opinion What's on Announcements E-Edition
News Peebles Innerleithen Walkerburn West Linton Biggar Borders

Formal application for wind farm approval set to be finalised

9th June

ENVIRONMENT LOCAL GOVERNMENT



EDF Windfarm

By John Hislop
Reporter

FOLLOWING more than two years of detailed environmental work and extensive community consultation, EDF Renewables UK is now finalising its submission for a formal application for Dunside wind farm, located close to the existing Fallago Rig wind farm in the Lammermuir Hills.

In time for the application, which is due for submission to the Scottish Government later in June, EDF Renewables UK will be holding three public exhibitions in community halls in the Scottish Borders and East Lothian over the coming weeks.

The exhibitions will provide information about the final designs, environmental surveys and assessments and will include drawings and visualisations of how the wind farm will look if the project progresses.

Members of the project team from EDF Renewables UK will be on hand to answer any questions at the exhibitions, which will be held as follows:

Tuesday June 20 3pm - 7pm: Westruther Village Hall, Westruther, Gordon TD3 6NE

Wednesday June 21 3pm - 7pm: Gifford Village Hall, Gifford, Haddington EH41 4QJ

Thursday June 22 3pm - 7pm: Longformacus Village Hall, Longformacus, Duns TD11 3PB

Anyone unable to attend the exhibitions can view the exhibition information on the Dunside wind farm website www.dunsidewindfarm.co.uk after the events.

The final proposal to be submitted is for a maximum of 15 turbines of up to 220m to blade tip. The layout of the wind farm has been refined and reflects environmental survey information and landscape design work as well as feedback from public exhibitions and stakeholder consultations carried out throughout 2022.

Dunside wind farm, once completed, will generate around 108MW of low carbon electricity enough to power up to 62,600 homes along with significant funds to be invested in communities and projects in the local communities surrounding the wind farm area.

Richard Fisher, Development Project Manager at EDF Renewables UK, said: "As we reach the application submission, community engagement is one of our top priorities. Our aim, over the last two years, has been to engage with and listen to the concerns of local residents and stakeholders. This final round of public consultations is a further opportunity for anyone who has an interest in the development to find out about the potential benefits Dunside wind farm could bring to the surrounding communities and the boost it could give to the local economies."

Anyone unable to attend the exhibitions can view the exhibition information on the Dunside Wind Farm website www.dunsidewindfarm.co.uk after the events.

ENVIRONMENT LOCAL GOVERNMENT

Share 0 Comments

Border Telegraph

News Sport Announcements What's on YourSay Business E-Edition
News Galashiels Selkirk Earlston Jedburgh Kelso Hawick Melrose Peebles

Formal application for wind farm approval set to be finalised

9th June

ENVIRONMENT LOCAL GOVERNMENT SCOTTISH BORDERS



EDF Windfarm

By John Hislop
Reporter

FOLLOWING more than two years of detailed environmental work and extensive community consultation, EDF Renewables UK is now finalising its submission for a formal application for Dunside wind farm, located close to the existing Fallago Rig wind farm in the Lammermuir Hills.

In time for the application, which is due for submission to the Scottish Government later in June, EDF Renewables UK will be holding three public exhibitions in community halls in the Scottish Borders and East Lothian over the coming weeks.

The exhibitions will provide information about the final designs, environmental surveys and assessments and will include drawings and visualisations of how the wind farm will look if the project progresses.

Members of the project team from EDF Renewables UK will be on hand to answer any questions at the exhibitions, which will be held as follows:

Tuesday June 20 3pm - 7pm: Westruther Village Hall, Westruther, Gordon TD3 6NE

Wednesday June 21 3pm - 7pm: Gifford Village Hall, Gifford, Haddington EH41 4QJ

Thursday June 22 3pm - 7pm: Longformacus Village Hall, Longformacus, Duns TD11 3PB

Anyone unable to attend the exhibitions can view the exhibition information on the Dunside wind farm website www.dunsidewindfarm.co.uk after the events.

The final proposal to be submitted is for a maximum of 15 turbines of up to 220m to blade tip. The layout of the wind farm has been refined and reflects environmental survey information and landscape design work as well as feedback from public exhibitions and stakeholder consultations carried out throughout 2022.

Dunside wind farm, once completed, will generate around 108MW of low carbon electricity enough to power up to 62,600 homes along with significant funds to be invested in communities and projects in the local communities surrounding the wind farm area.

Richard Fisher, Development Project Manager at EDF Renewables UK, said: "As we reach the application submission, community engagement is one of our top priorities. Our aim, over the last two years, has been to engage with and listen to the concerns of local residents and stakeholders. This final round of public consultations is a further opportunity for anyone who has an interest in the development to find out about the potential benefits Dunside wind farm could bring to the surrounding communities and the boost it could give to the local economies."

Anyone unable to attend the exhibitions can view the exhibition information on the Dunside Wind Farm website www.dunsidewindfarm.co.uk after the events.

ENVIRONMENT LOCAL GOVERNMENT

Share 0 Comments

JUNE 2023

Appendix 7

Dunside wind farm Media Coverage 2022 – 2023:

The screenshot shows a news article on the reNEWS.BIZ website. The main headline is "EDF to submit 108MW Scottish wind farm plans" with a sub-headline "Dunside project will comprise a maximum of 15 turbines". The article text includes: "EDF Renewables UK intends to submit a formal application for the 108MW Dunside wind farm to the Scottish Government later this month. The final proposal for the project located close to the existing Fallago Rig development in the Lammermuir Hills is for a maximum of 15 turbines with tip heights of up to 220m. The layout of the wind farm has been refined and reflects environmental survey information and landscape design work as well as feedback from public exhibitions and stakeholder consultations carried out throughout 2022, EDF said. Dunside, once completed, will generate around 108MW of low carbon electricity – enough to power up to 62,600 homes – along with significant funds to be invested in communities and projects in the local communities surrounding the wind farm area, it added. Ahead of the application, EDF Renewables UK will be holding three public exhibitions in community halls in the Scottish Borders and East Lothian over the coming weeks. The events will provide information about the final designs, environmental surveys and assessments and will include drawings and visualisations of how the wind farm will look if the project progresses. Development project manager at EDF Renewables UK Richard Fisher said: 'As we reach the application submission, community engagement is one of our top priorities. 'Our aim, over the last two years, has been to engage with and listen to the concerns of local residents and stakeholders. 'This final round of public consultations is a further opportunity for anyone who has an interest in the development to find out about the potential benefits Dunside wind farm could bring to the surrounding communities and the boost it could give to the local economies.'"

RELATED STORIES

- RES unveils Scottish wind farm plans 17 MAY 2023
- EDF Renewables unveils 108MW Scottish wind farm 21 MARCH 2022
- EDF Wood in giant leap on Lewis 20 JULY 2018
- Scots allow Windy Edge 10 JUNE 2016
- North Lothian seeks Scottish wind 4 FEBRUARY 2016

reNEWS PREMIUM
SUBSCRIBE FREE TRIAL
For exclusive business intelligence, subscribe to our fortnightly publication

TAGS: EDF RENEWABLES UK, EUROPE, ONSHORE WIND, SCOTLAND

JUNE 2023

**EDF Renewables can be
contacted at:**
info@dunsidewindfarm.co.uk

Dunside
wind farm

**Dunside wind farm
EDF Renewables UK
Atria One
144 Morrison Street
Edinburgh
EH3 8EX**

www.dunsidewindfarm.co.uk

Dunside
wind farm



edf
renewables

dunsidewindfarm.co.uk