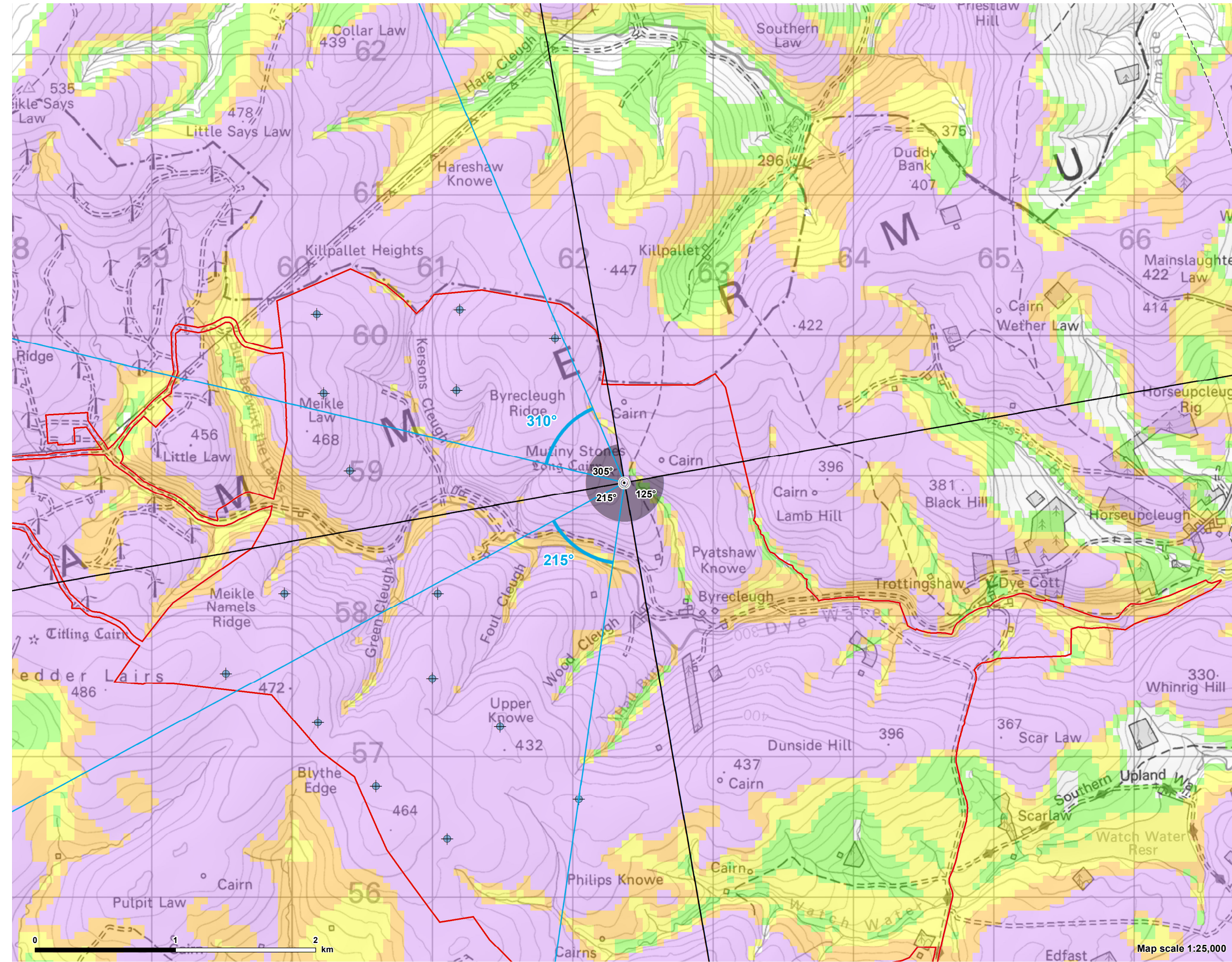


Contains Ordnance Survey data © Crown copyright and database right 2023. © Crown copyright and database rights 2023 Ordnance Survey 0100031673



Notes:
The ZTV is calculated to turbine tip height (220m) from a viewing height of 2m above ground level.

The terrain model assumes bare ground and is derived from OS Terrain 50 height data (obtained from Ordnance Survey in January 2023). Earth curvature and atmospheric refraction have been taken into account. The ZTV was calculated using ArcMap 10.8.1.

© Crown copyright and database rights 2023 Ordnance Survey 0100031673

CB:JH EB:Harbich_J LUC FIGS_X_11638_r0_HeritageVPOverviews_45km_A3L_07/08/2023 Source: LUC, EDF





Baseline photograph



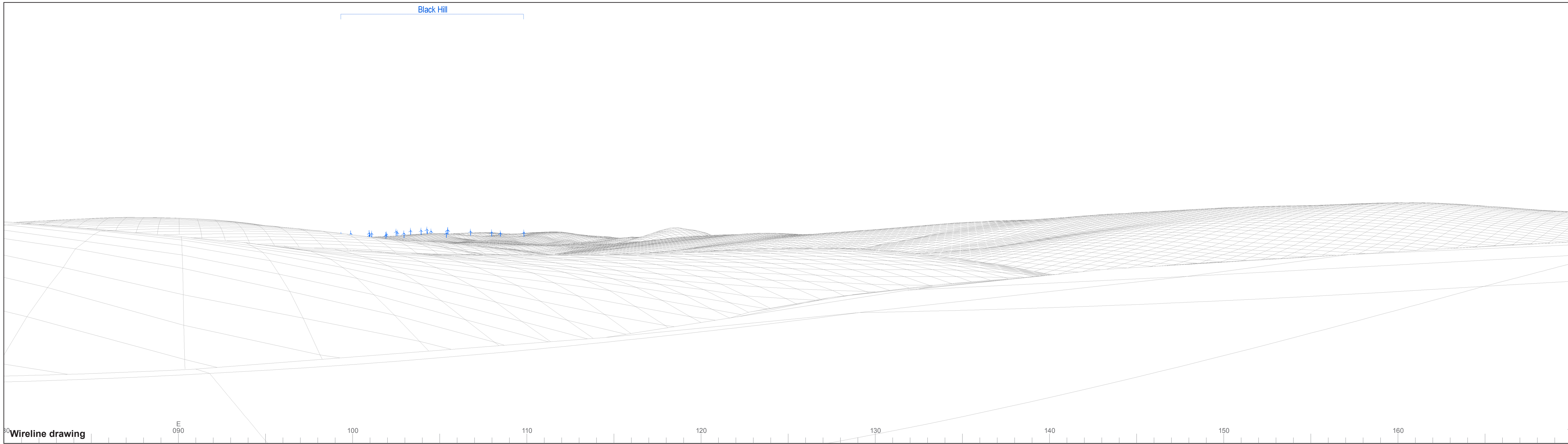
OS reference: 362368 E 658951 N
AOD: 378 m
Direction of view: 125°
Nearest turbine: 1.14 km

Horizontal field of view: 90° (cylindrical projection)
Principal distance: 522 mm
Paper size: 841 x 297 mm (half A1)
Correct printed image size: 820 x 230 mm

Camera: Nikon D750
Lens: 50mm Fixed Focal Length
Camera height: 1.5 m

Photography Date: 14/02/2023
Photography Time: 14:26

Black Hill



Wireline drawing

E 090

100

110

120

130

140

150

160

170



OS reference: 362368 E 658951 N
 AOD: 378 m
 Direction of view: 125°
 Nearest turbine: 1.14 km

Horizontal field of view: 90° (cylindrical projection)
 Principal distance: 522 mm
 Paper size: 841 x 297 mm (half A1)
 Correct printed image size: 820 x 230 mm

Wind Farm Developments key (by status):

- Proposed scheme
- Operational
- Under construction
- Consented
- Appeal/PLI Application
- Newlands Hill*

* Newlands Hill wind farm final layout has been provided by its developer. Other projects at EIA scoping stage are not considered in Chapter 4: Landscape and Visual Impact Assessment but are considered in Appendix 4.4: Cumulative Assessment for Scoping Stage Sites.

© Crown copyright and database rights 2023 Ordnance Survey data. Licence number: 0100051673



Baseline photograph

Extent of 53.5° planar panorama

Dunside



Wireline drawing

S 180

190

200

210

220

230

240

250

260



OS reference: 362368 E 658951 N
 AOD: 378 m
 Direction of view: 215°
 Nearest turbine: 1.14 km

Horizontal field of view: 90° (cylindrical projection)
 Principal distance: 522 mm
 Paper size: 841 x 297 mm (half A1)
 Correct printed image size: 820 x 230 mm

Wind Farm Developments key
 (by status):

- Proposed scheme
- Operational
- Under construction
- Consented
- Appeal/PLI Application
- Newlands Hill*

* Newlands Hill wind farm final layout has been provided by its developer. Other projects at EIA scoping stage are not considered in Chapter 4: Landscape and Visual Impact Assessment but are considered in Appendix 4.4: Cumulative Assessment for Scoping Stage Sites.

Dunside Wind Farm
 Figure 5.6d
 Viewpoint CH02: In-combination view from Mutiny Stones (SM361)

© Crown copyright and database rights 2023 Ordnance Survey data. Licence number: 010051673



Baseline photograph



OS reference: 362368 E 658951 N
AOD: 378 m
Direction of view: 305°
Nearest turbine: 1.14 km

Horizontal field of view: 90° (cylindrical projection)
Principal distance: 522 mm
Paper size: 841 x 297 mm (half A1)
Correct printed image size: 820 x 230 mm

Camera: Nikon D750
Lens: 50mm Fixed Focal Length
Camera height: 1.5 m

Photography Date: 14/02/2023
Photography Time: 14:26

Extent of 53.5° planar panorama

Dunside



Wireline drawing

W 270

280

290

300

310

320

330

340

350



OS reference: 362368 E 658951 N
 AOD: 378 m
 Direction of view: 305°
 Nearest turbine: 1.14 km

Horizontal field of view: 90° (cylindrical projection)
 Principal distance: 522 mm
 Paper size: 841 x 297 mm (half A1)
 Correct printed image size: 820 x 230 mm

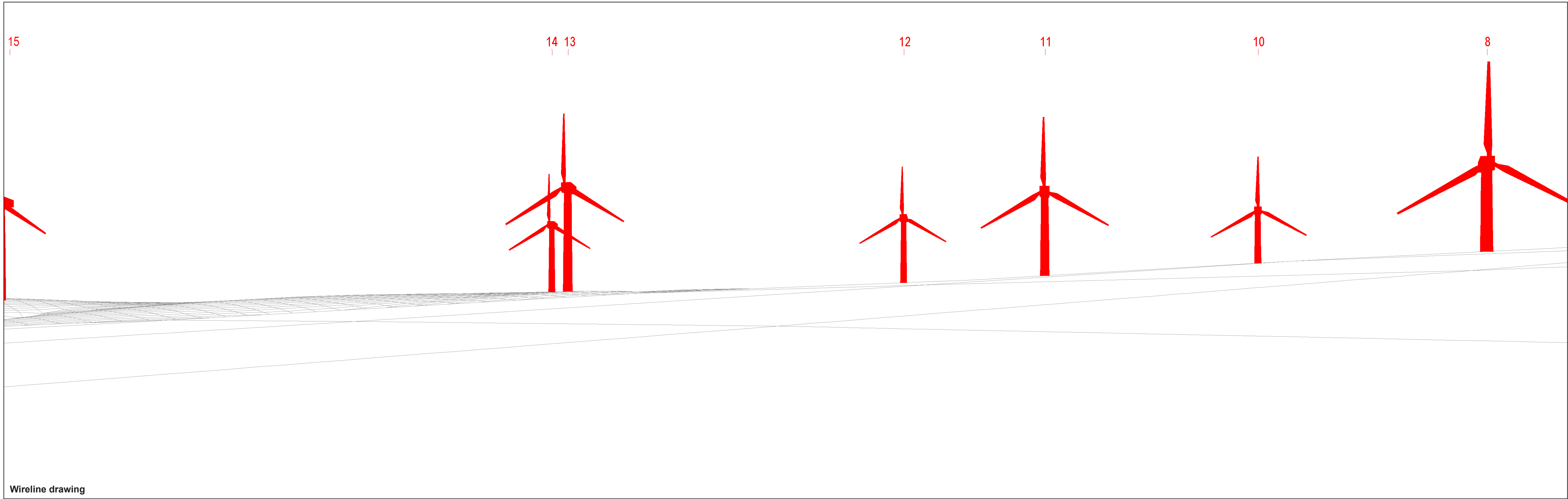
Wind Farm Developments key (by status):

- Proposed scheme
- Operational
- Under construction
- Consented
- Appeal/PLI Application
- Newlands Hill*

* Newlands Hill wind farm final layout has been provided by its developer. Other projects at EIA scoping stage are not considered in Chapter 4: Landscape and Visual Impact Assessment but are considered in Appendix 4.4: Cumulative Assessment for Scoping Stage Sites.

Dunside Wind Farm
Figure 5.6f
 Viewpoint CH02: In-combination view from Mutiny Stones (SM361)

© Crown copyright and database rights 2023 Ordnance Survey data. Licence number: 0100051673



Wireline drawing

OS reference: 362368 E 658951 N
 AOD: 378 m
 Direction of view: 215°
 Nearest turbine: 1.14 km

Horizontal field of view: 53.5° (planar projection)
 Principal distance: 812.5 mm
 Paper size: 841 x 297 mm (half A1)
 Correct printed image size: 820 x 260 mm

Wind Farm Developments key
 (by status):

Proposed scheme
 Operational



Dunside Wind Farm

Figure 5.6g

Viewpoint CH02: In-combination view from Mutiny Stones (SM361)

© Crown copyright and database rights 2023 Ordnance Survey data. Licence number: 0100051673



Photomontage
The view horizon has been lowered in this image to allow a greater visible vertical extent of turbines to be shown

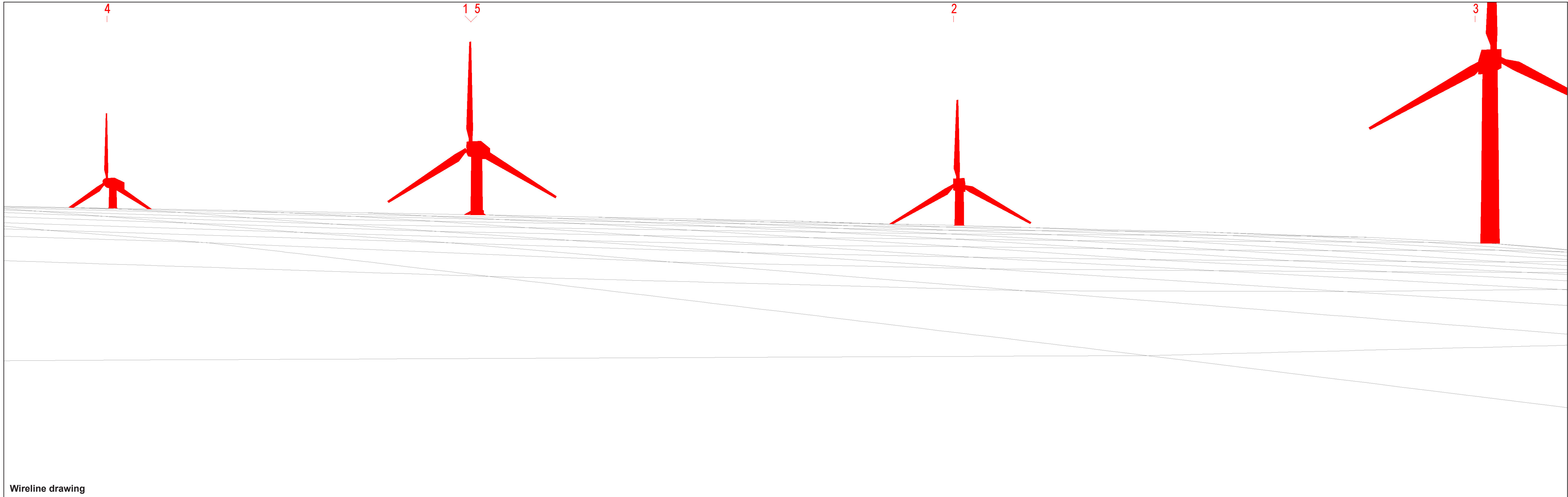


OS reference: 362368 E 658951 N
AOD: 378 m
Direction of view: 215°
Nearest turbine: 1.14 km

Horizontal field of view: 53.5° (planar projection)
Principal distance: 812.5 mm
Paper size: 841 x 297 mm (half A1)
Correct printed image size: 820 x 260 mm

Camera: Nikon D750
Lens: 50mm Fixed Focal Length
Camera height: 1.5 m

Photography Date: 14/02/2023
Photography Time: 14:26



Wireline drawing



OS reference: 362368 E 658951 N
 AOD: 378 m
 Direction of view: 310°
 Nearest turbine: 1.14 km

Horizontal field of view: 53.5° (planar projection)
 Principal distance: 812.5 mm
 Paper size: 841 x 297 mm (half A1)
 Correct printed image size: 820 x 260 mm

Wind Farm Developments key
 (by status):

Proposed scheme
 Operational

Dunside Wind Farm
Figure 5.6i
 Viewpoint CH02: In-combination view from Mutiny Stones (SM361)

© Crown copyright and database rights 2023 Ordnance Survey data. Licence number: 0100051673



Photomontage

The view horizon has been lowered in this image to allow a greater visible vertical extent of turbines to be shown



OS reference: 362368 E 658951 N
AOD: 378 m
Direction of view: 310°
Nearest turbine: 1.14 km

Horizontal field of view: 53.5° (planar projection)
Principal distance: 812.5 mm
Paper size: 841 x 297 mm (half A1)
Correct printed image size: 820 x 260 mm

Camera: Nikon D750
Lens: 50mm Fixed Focal Length
Camera height: 1.5 m

Photography Date: 14/02/2023
Photography Time: 14:26