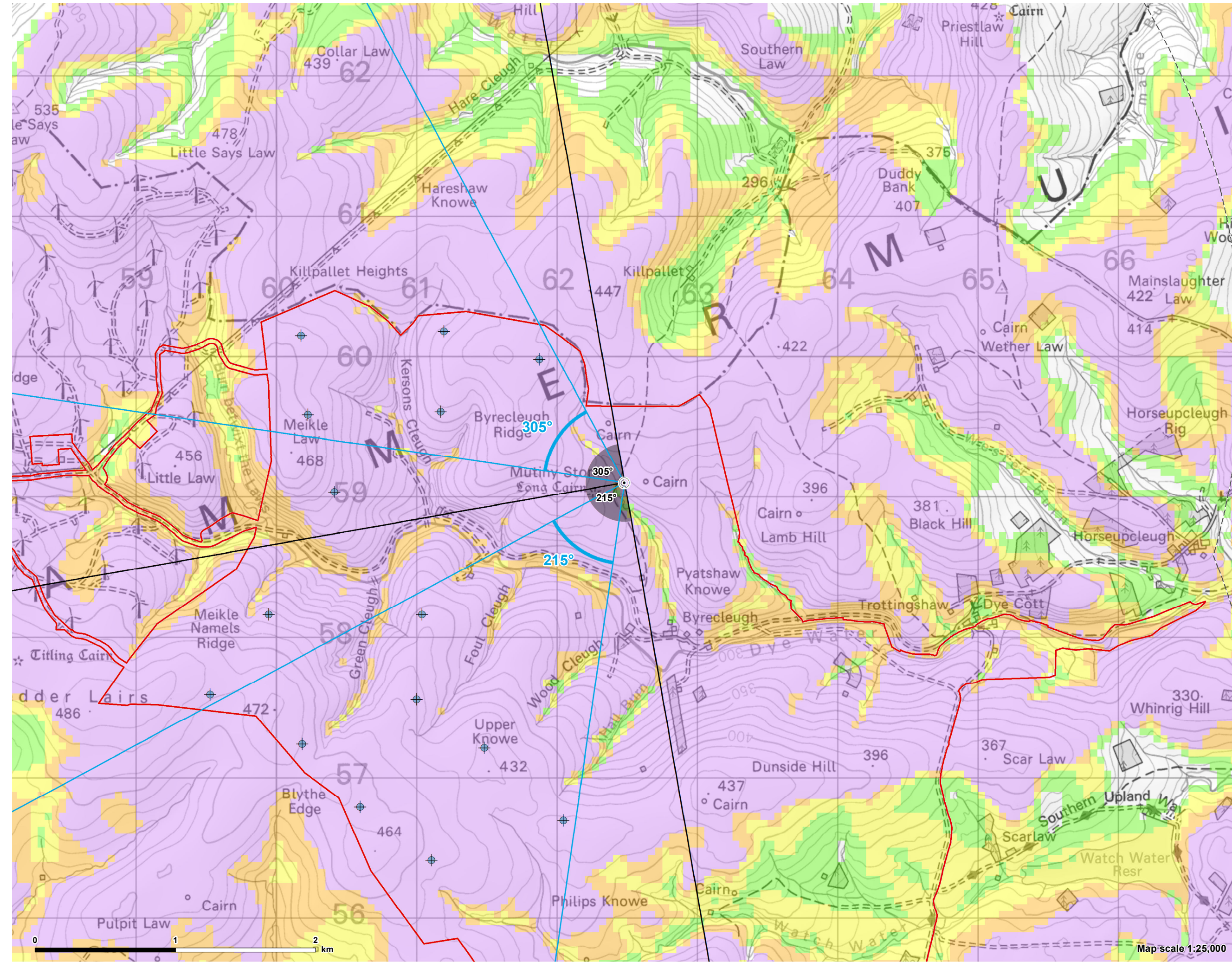


Contains Ordnance Survey data © Crown copyright and database right 2023. © Crown copyright and database rights 2023 Ordnance Survey 0100031673



© Crown copyright and database rights 2023 Ordnance Survey 0100031673

Figure 5.5:  
Viewpoint CH01 - In-combination view from Mutiny Stones (SM361)

- Site Boundary
  - + Turbine
  - 5km intervals from outermost turbines
  - LVIA study area 45km from outermost turbines
  - Viewpoint
- Theoretical blade tip visibility (220m)**
- 1-4 turbines visible
  - 5-8 turbines visible
  - 9-12 turbines visible
  - 13-15 turbines visible
- ∠ 53.5° Field of View
  - ∠ 90° Field of View

Notes:  
The ZTV is calculated to turbine tip height (220m) from a viewing height of 2m above ground level.

The terrain model assumes bare ground and is derived from OS Terrain 50 height data (obtained from Ordnance Survey in January 2023). Earth curvature and atmospheric refraction have been taken into account. The ZTV was calculated using ArcMap 10.8.1.

CB:JH EB:Harbich\_J LUC FIGS\_X\_11838\_r0\_HeritageVPOverviews\_45km\_A3L\_07/08/2023  
Source: LUC, EDF





Baseline photograph



OS reference: 362480 E 659102 N  
AOD: 378 m  
Direction of view: 215°  
Nearest turbine: 1.06 km

Horizontal field of view: 90° (cylindrical projection)  
Principal distance: 522 mm  
Paper size: 841 x 297 mm (half A1)  
Correct printed image size: 820 x 230 mm

Camera: Nikon D750  
Lens: 50mm Fixed Focal Length  
Camera height: 1.5 m

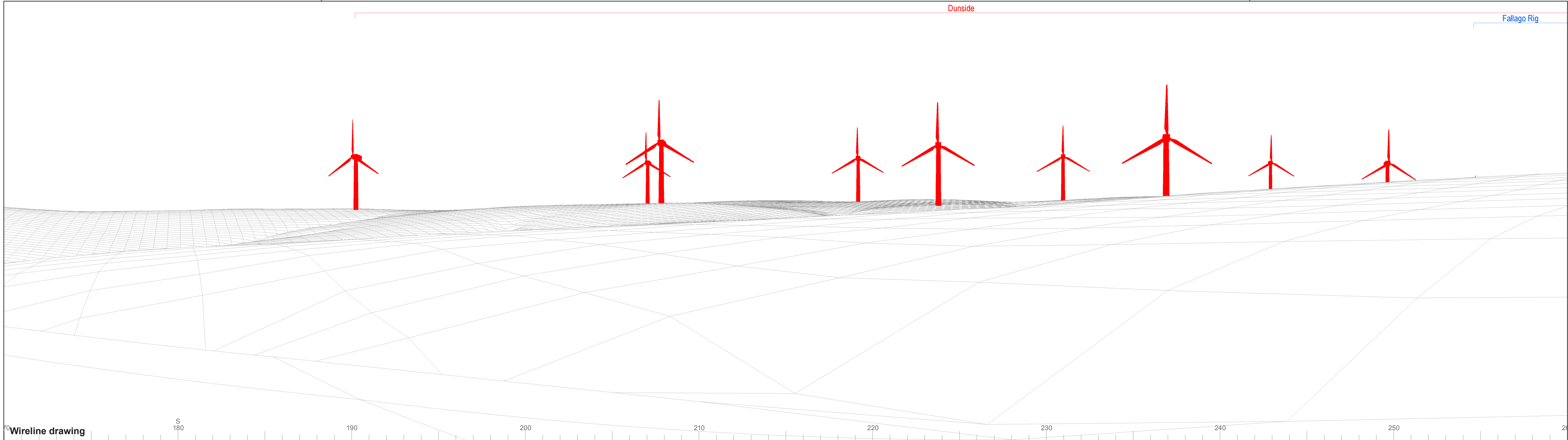
Photography Date: 14/02/2023  
Photography Time: 13:57



Extent of 53.5° planar panorama

Dunside

Fallago Rig



Wireline drawing

S  
180

190

200

210

220

230

240

250

260



OS reference: 362480 E 659102 N  
 AOD: 378 m  
 Direction of view: 215°  
 Nearest turbine: 1.06 km

Horizontal field of view: 90° (cylindrical projection)  
 Principal distance: 522 mm  
 Paper size: 841 x 297 mm (half A1)  
 Correct printed image size: 820 x 230 mm

Wind Farm Developments key  
 (by status):

Proposed scheme  
 Operational  
 Under construction  
 Consented  
 Appeal/PLI  
 Application  
 Newlands Hill\*

\* Newlands Hill wind farm final layout has been provided by its developer.  
 Other projects at EIA scoping stage are not considered in Chapter 4: Landscape and Visual Impact Assessment but are considered in Appendix 4.4: Cumulative Assessment for Scoping Stage Sites.

Dunside Wind Farm  
 Figure 5.5b  
 Viewpoint CH01: In-combination view from Mutiny Stones (SM361)

© Crown copyright and database rights 2023 Ordnance Survey data. Licence number: 0100051673





Baseline photograph



OS reference: 362480 E 659102 N  
AOD: 378 m  
Direction of view: 305°  
Nearest turbine: 1.06 km

Horizontal field of view: 90° (cylindrical projection)  
Principal distance: 522 mm  
Paper size: 841 x 297 mm (half A1)  
Correct printed image size: 820 x 230 mm

Camera: Nikon D750  
Lens: 50mm Fixed Focal Length  
Camera height: 1.5 m

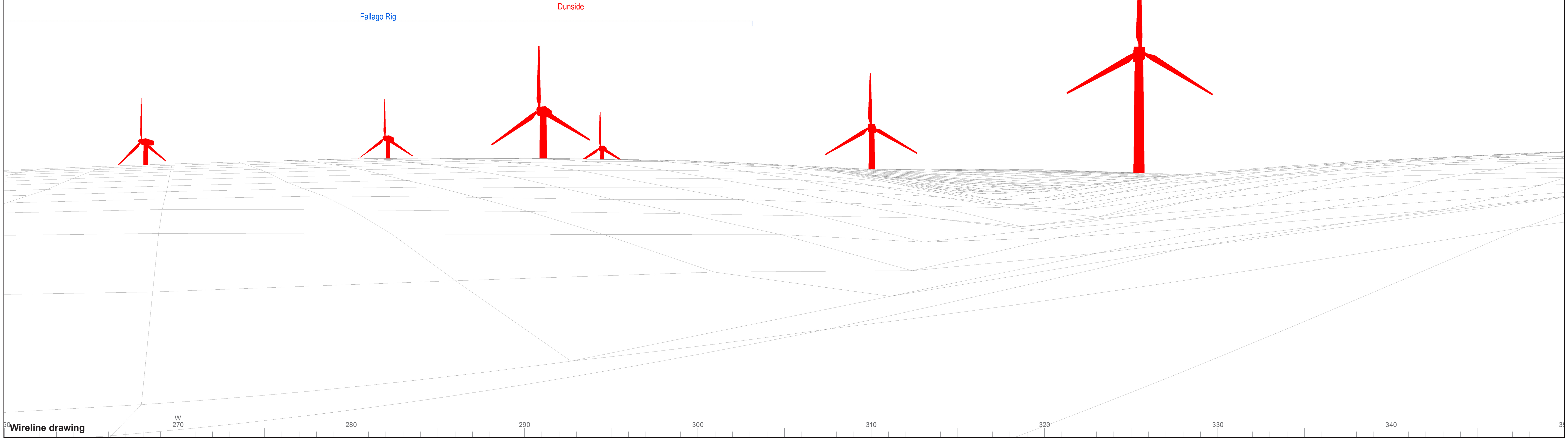
Photography Date: 14/02/2023  
Photography Time: 13:57



Extent of 53.5° planar panorama

Fallago Rig

Dunside



Wireline drawing

W 270

280

290

300

310

320

330

340

350



OS reference: 362480 E 659102 N  
 AOD: 378 m  
 Direction of view: 305°  
 Nearest turbine: 1.06 km

Horizontal field of view: 90° (cylindrical projection)  
 Principal distance: 522 mm  
 Paper size: 841 x 297 mm (half A1)  
 Correct printed image size: 820 x 230 mm

Wind Farm Developments key  
 (by status):

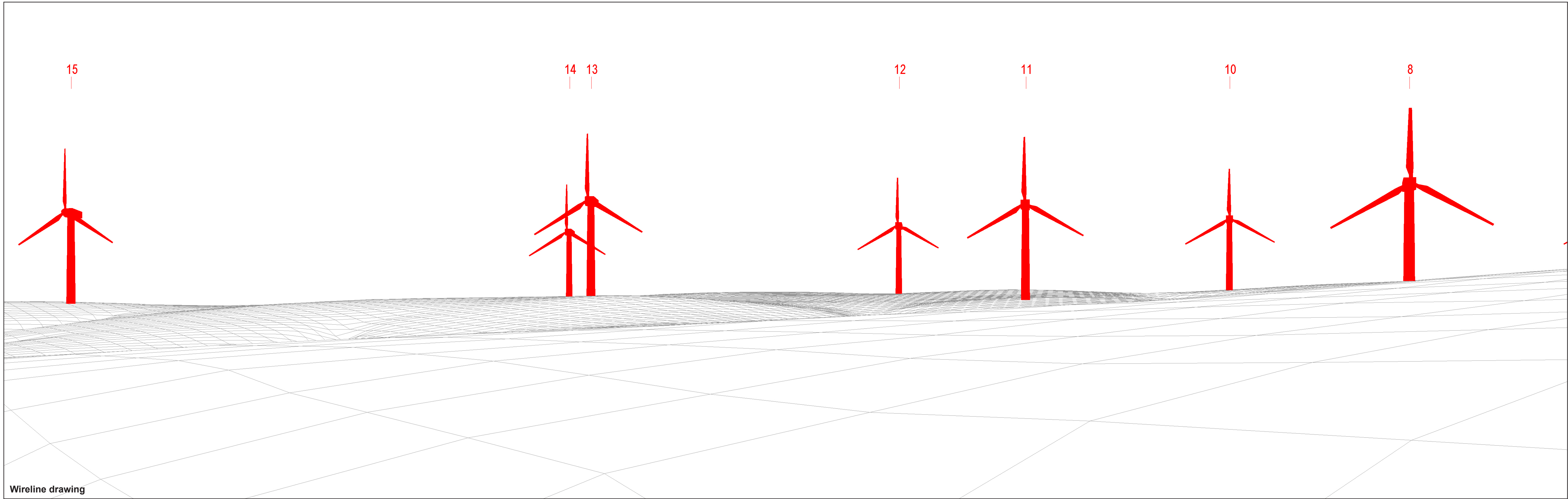
Proposed scheme  
 Operational  
 Under construction  
 Consented  
 Appeal/PLI Application  
 Newlands Hill\*

\* Newlands Hill wind farm final layout has been provided by its developer. Other projects at EIA scoping stage are not considered in Chapter 4: Landscape and Visual Impact Assessment but are considered in Appendix 4.4: Cumulative Assessment for Scoping Stage Sites.

Dunside Wind Farm  
 Figure 5.5d  
 Viewpoint CH01: In-combination view from Mutiny Stones (SM361)

© Crown copyright and database rights 2023 Ordnance Survey data. Licence number: 0100051673





Wireline drawing

OS reference: 362480 E 659102 N  
 AOD: 378 m  
 Direction of view: 215°  
 Nearest turbine: 1.06 km

Horizontal field of view: 53.5° (planar projection)  
 Principal distance: 812.5 mm  
 Paper size: 841 x 297 mm (half A1)  
 Correct printed image size: 820 x 260 mm

Wind Farm Developments key  
 (by status):

Proposed scheme  
 Operational



© Crown copyright and database rights 2023 Ordnance Survey data. Licence number: 0100051673





**Photomontage**  
The view horizon has been lowered in this image to allow a greater visible vertical extent of turbines to be shown



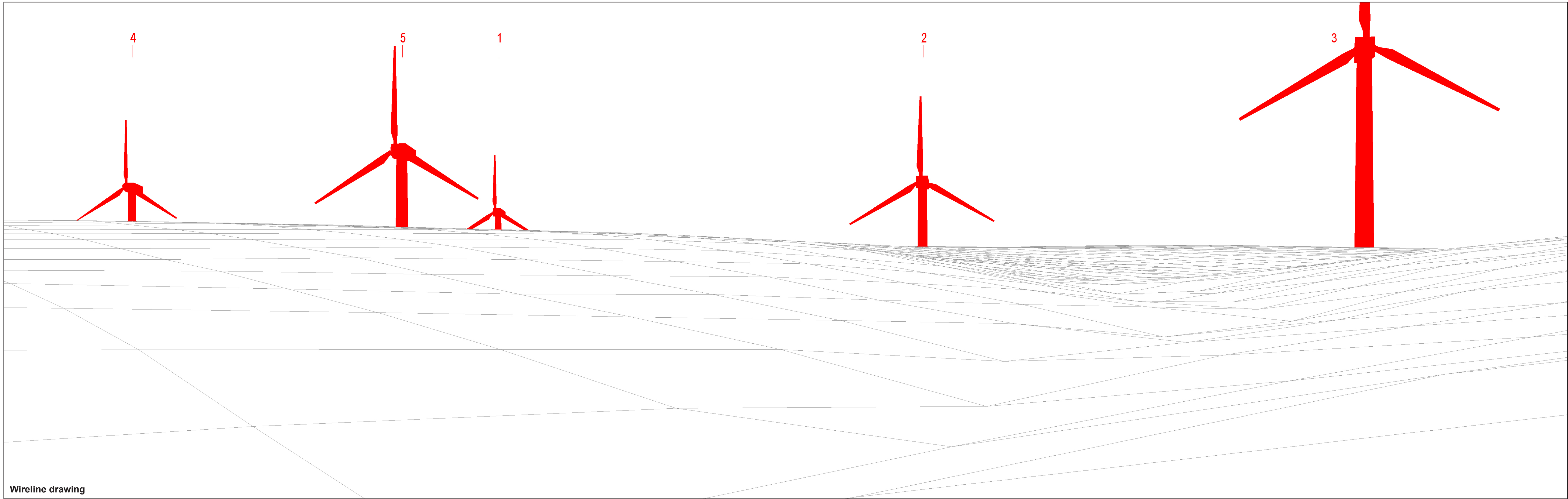
OS reference: 362480 E 659102 N  
AOD: 378 m  
Direction of view: 215°  
Nearest turbine: 1.06 km

Horizontal field of view: 53.5° (planar projection)  
Principal distance: 812.5 mm  
Paper size: 841 x 297 mm (half A1)  
Correct printed image size: 820 x 260 mm

Camera: Nikon D750  
Lens: 50mm Fixed Focal Length  
Camera height: 1.5 m

Photography Date: 14/02/2023  
Photography Time: 13:57





Wireline drawing



OS reference:	362480 E 659102 N	Horizontal field of view:	53.5° (planar projection)
AOD:	378 m	Principal distance:	812.5 mm
Direction of view:	305°	Paper size:	841 x 297 mm (half A1)
Nearest turbine:	1.06 km	Correct printed image size:	820 x 260 mm

Wind Farm Developments key  
(by status):

Proposed scheme  
Operational

Dunside Wind Farm  
**Figure 5.5g**  
Viewpoint CH01: In-combination view from Mutiny Stones (SM361)

© Crown copyright and database rights 2023 Ordnance Survey data. Licence number: 0100051673





**Photomontage**  
The view horizon has been lowered in this image to allow a greater visible vertical extent of turbines to be shown



OS reference: 362480 E 659102 N  
AOD: 378 m  
Direction of view: 305°  
Nearest turbine: 1.06 km

Horizontal field of view: 53.5° (planar projection)  
Principal distance: 812.5 mm  
Paper size: 841 x 297 mm (half A1)  
Correct printed image size: 820 x 260 mm

Camera: Nikon D750  
Lens: 50mm Fixed Focal Length  
Camera height: 1.5 m

Photography Date: 14/02/2023  
Photography Time: 13:57