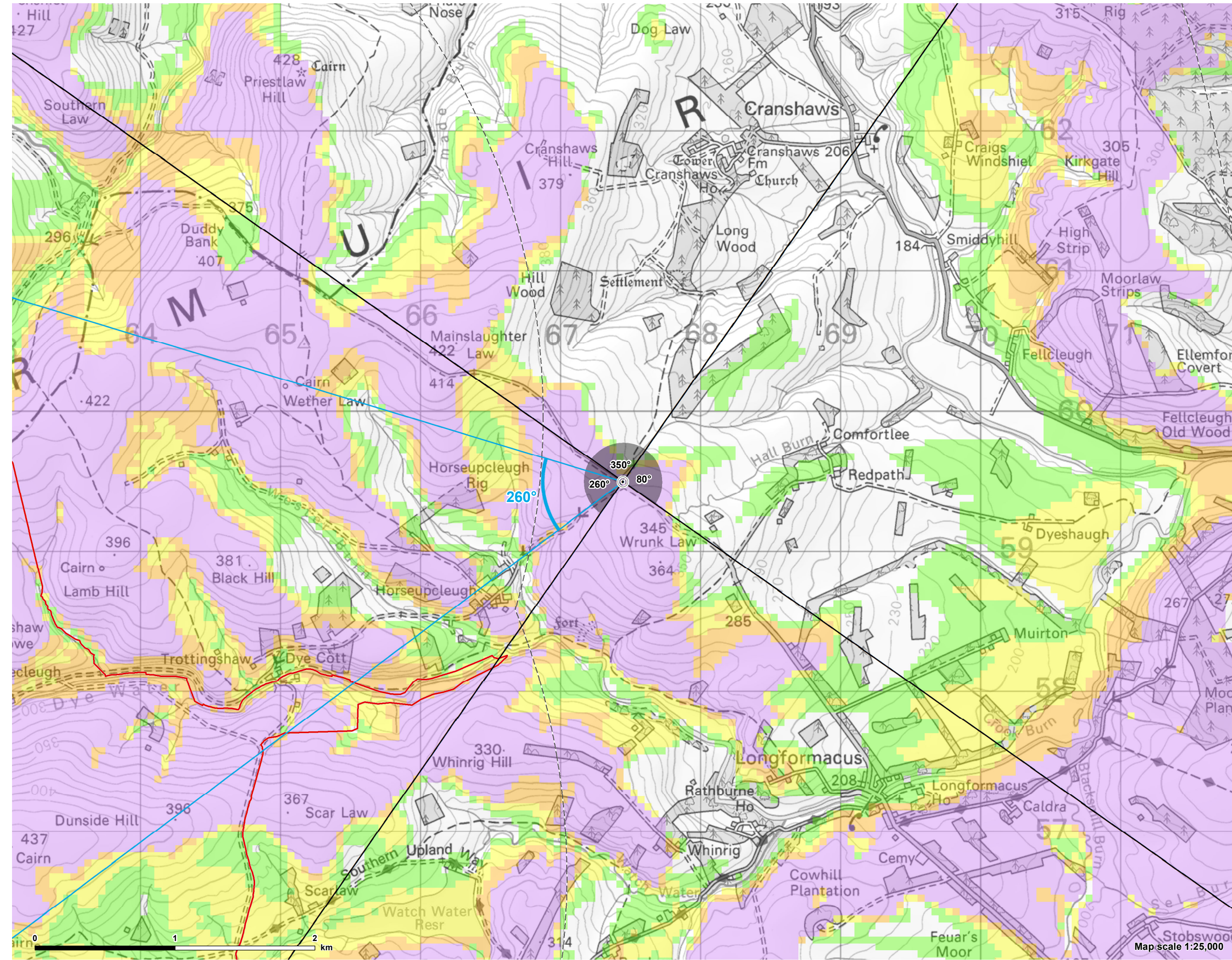


Contains Ordnance Survey data © Crown copyright and database right 2023. © Crown copyright and database rights 2023 Ordnance Survey 0100031673



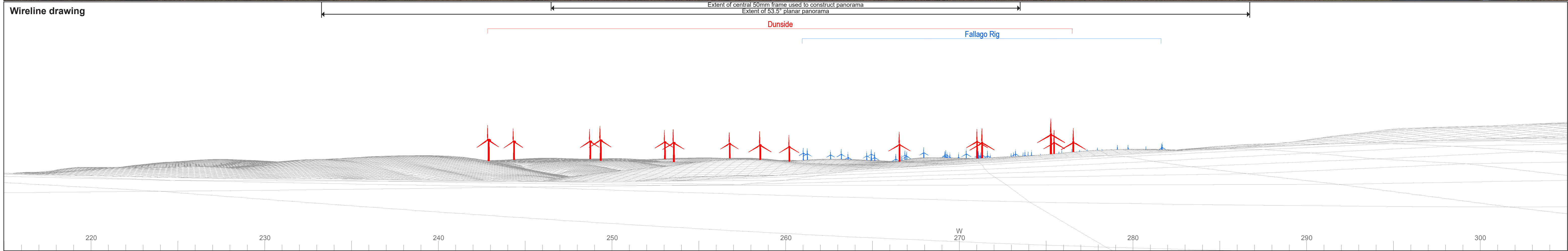
**Notes:**  
The ZTV is calculated to turbine tip height (220m) from a viewing height of 2m above ground level.

The terrain model assumes bare ground and is derived from OS Terrain 50 height data (obtained from Ordnance Survey in January 2023). Earth curvature and atmospheric refraction have been taken into account. The ZTV was calculated using ArcMap 10.8.1.



CB:JH EB:Härlich\_J LUC FIG\_02\_Xa\_11838\_r0\_VPOverviews\_45km\_A3L 06/06/2023 Source: LUC, EDF

© Crown copyright and database rights 2023 Ordnance Survey 0100031673



OS reference: 367446E 659497N  
AOD: 338 m  
Direction of view: 260°  
Nearest turbine: 5.59 km

Horizontal field of view: 90° (cylindrical projection)  
Principal distance: 522 mm  
Paper size: 841 x 297 mm (half A1)  
Correct printed image size: 820 x 260 mm

Camera: Nikon D750  
Lens: 50mm Fixed Focal Length  
Camera height: 1.5 m

Photography Date: 08/10/2022  
Photography Time: 08:28

Wind Farm Developments key (by status):

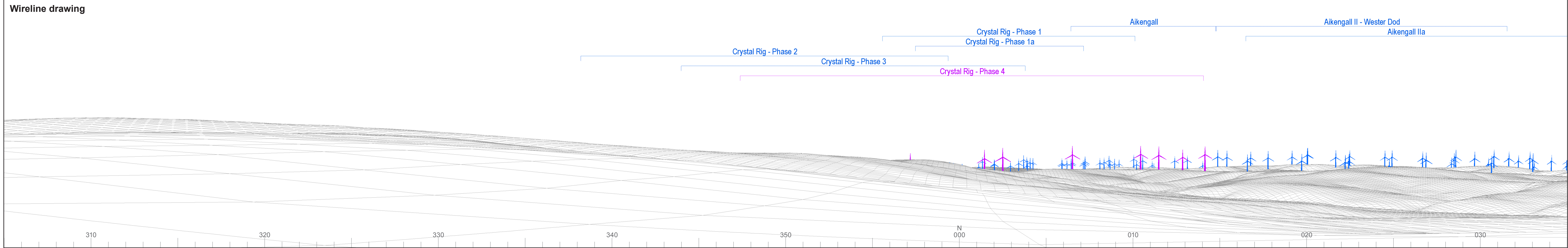
Proposed scheme  
Operational  
Under construction  
Consented

Appeal/PLI Application  
Newlands Hill\*

\* Newlands Hill wind farm final layout has been provided by its developer. Other projects at EIA scoping stage are not considered in Chapter 4: Landscape and Visual Impact Assessment but are considered in Appendix 4.4: Cumulative Assessment for Scoping Stage Sites.

Dunside Wind Farm  
Figure 4.2.5a  
Viewpoint 5: Minor Road near Wrunk Law

© Crown copyright and database rights 2023 Ordnance Survey data. Licence number: 0100051673



OS reference: 367446E 659497N  
AOD: 338 m  
Direction of view: 350°  
Nearest turbine: 5.59 km

Horizontal field of view: 90° (cylindrical projection)  
Principal distance: 522 mm  
Paper size: 841 x 297 mm (half A1)  
Correct printed image size: 820 x 260 mm

Camera: Nikon D750  
Lens: 50mm Fixed Focal Length  
Camera height: 1.5 m

Photography Date: 08/10/2022  
Photography Time: 08:28

Wind Farm Developments key (by status):

Proposed scheme  
Operational  
Under construction  
Consented  
Appeal/PLI Application  
Newlands Hill\*

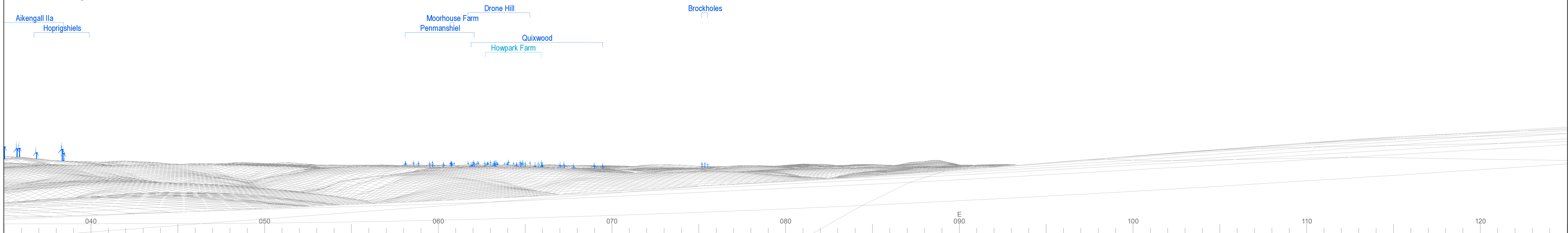
\* Newlands Hill wind farm final layout has been provided by its developer. Other projects at EIA scoping stage are not considered in Chapter 4: Landscape and Visual Impact Assessment but are considered in Appendix 4.4: Cumulative Assessment for Scoping Stage Sites.



Baseline photograph

This image provides landscape and visual context only

Wireline drawing



OS reference: 367446E 659497N  
 AOD: 338 m  
 Direction of view: 80°  
 Nearest turbine: 5.59 km

Horizontal field of view: 90° (cylindrical projection)  
 Principal distance: 522 mm  
 Paper size: 841 x 297 mm (half A1)  
 Correct printed image size: 820 x 260 mm

Camera: Nikon D750  
 Lens: 50mm Fixed Focal Length  
 Camera height: 1.5 m

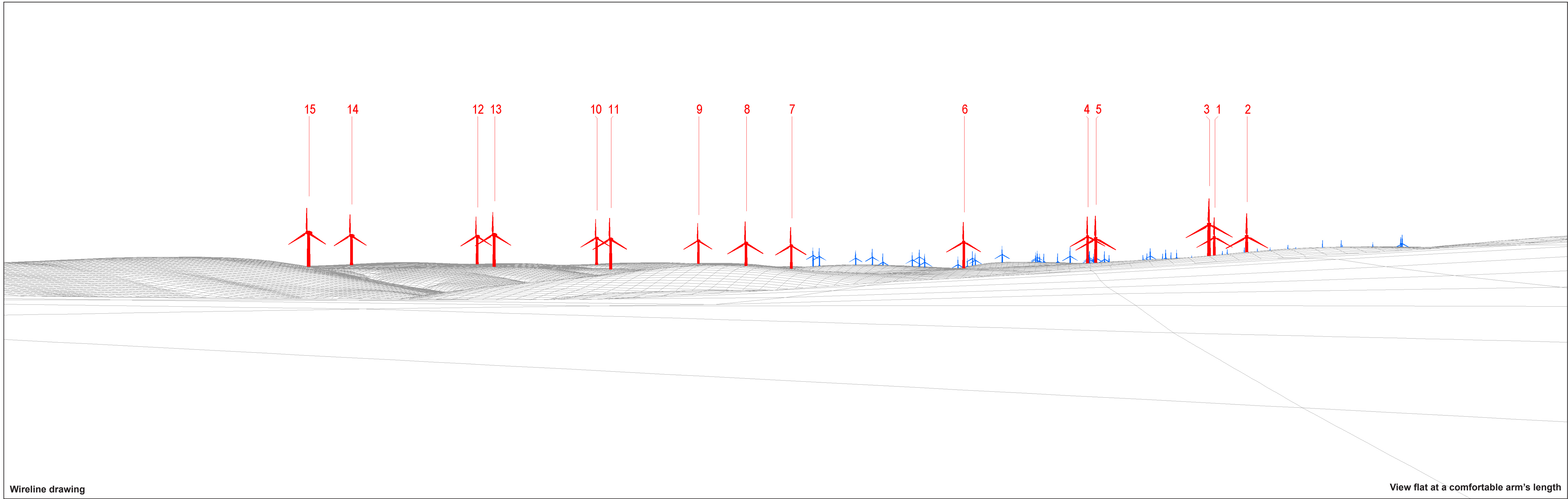
Photography Date: 08/10/2022  
 Photography Time: 08:28

Wind Farm Developments key (by status):

Proposed scheme  
 Operational  
 Under construction  
 Consented  
 Appeal/PLI Application  
 Newlands Hill\*

\* Newlands Hill wind farm final layout has been provided by its developer. Other projects at EIA scoping stage are not considered in Chapter 4: Landscape and Visual Impact Assessment but are considered in Appendix 4.4: Cumulative Assessment for Scoping Stage Sites.

© Crown copyright and database rights 2023 Ordnance Survey data. Licence number: 0100051673



Wireline drawing

View flat at a comfortable arm's length



OS reference: 367446E 659497N  
 AOD: 338 m  
 Direction of view: 260°  
 Nearest turbine: 5.59 km

Horizontal field of view: 53.5° (planar projection)  
 Principal distance: 812.5 mm  
 Paper size: 841 x 297 mm (half A1)  
 Correct printed image size: 820 x 260 mm

Wind Farm Developments key  
 (by status):  
 Proposed scheme  
 Operational

Dunside Wind Farm  
 Figure 4.2.5d  
 Viewpoint 5: Minor Road near Wrunk Law

© Crown copyright and database rights 2023 Ordnance Survey data Licence number: 0100051673



Photomontage

View flat at a comfortable arm's length



OS reference: 367446E 659497N  
AOD: 338 m  
Direction of view: 260°  
Nearest turbine: 5.59 km

Horizontal field of view: 53.5° (planar projection)  
Principal distance: 812.5 mm  
Paper size: 841 x 297 mm (half A1)  
Correct printed image size: 820 x 260 mm

Camera: Nikon D750  
Lens: 50mm Fixed Focal Length  
Camera height: 1.5 m

Photography Date: 08/10/2022  
Photography Time: 08:28

Dunside Wind Farm  
**Figure 4.2.5e**  
Viewpoint 5: Minor Road near Wrunk Law