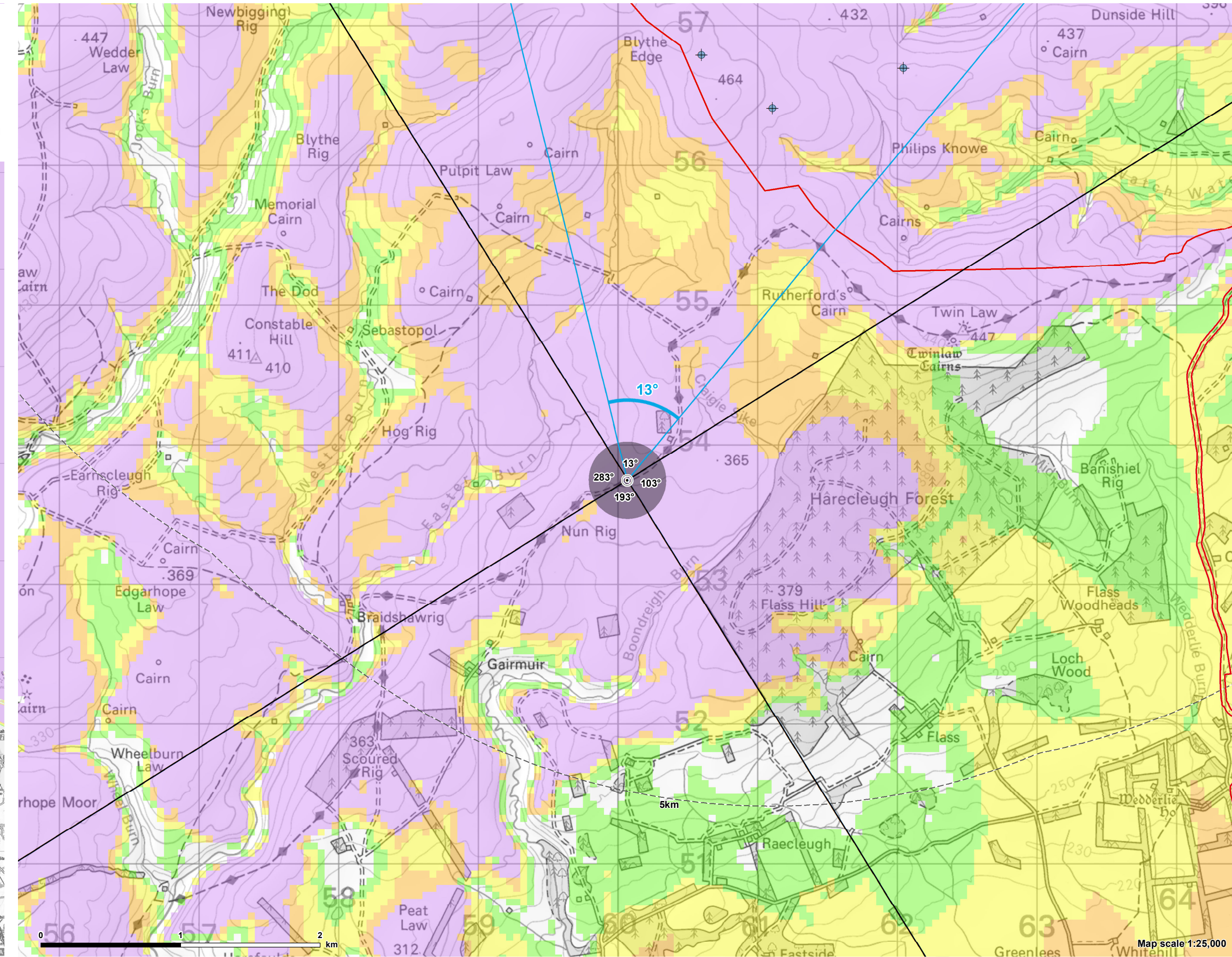


Contains Ordnance Survey data © Crown copyright and database right 2023. © Crown copyright and database rights 2023 Ordnance Survey 0100031673



© Crown copyright and database rights 2023 Ordnance Survey 0100031673

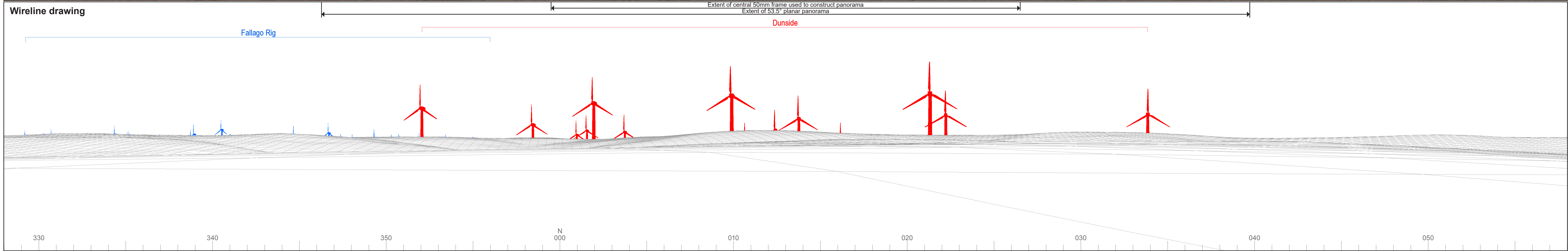
Figure 4.2.2:
Viewpoint 2 - Nun Rig, Southern Upland Way

- Site Boundary
 - Turbine
 - 5km intervals from outermost turbines
 - LVIA study area 45km from outermost turbines
 - Viewpoint
- Theoretical blade tip visibility (220m)**
- 1-4 turbines visible
 - 5-8 turbines visible
 - 9-12 turbines visible
 - 13-15 turbines visible
 - 53.5° Field of View
 - 90° Field of View

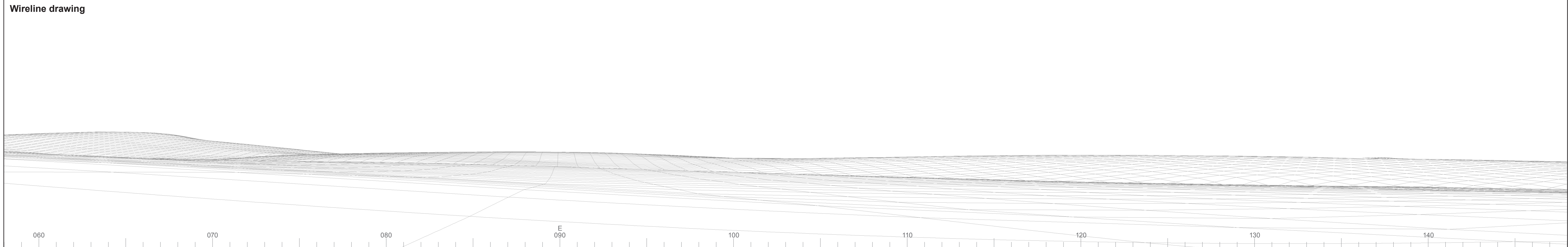
Notes:
The ZTV is calculated to turbine tip height (220m) from a viewing height of 2m above ground level.

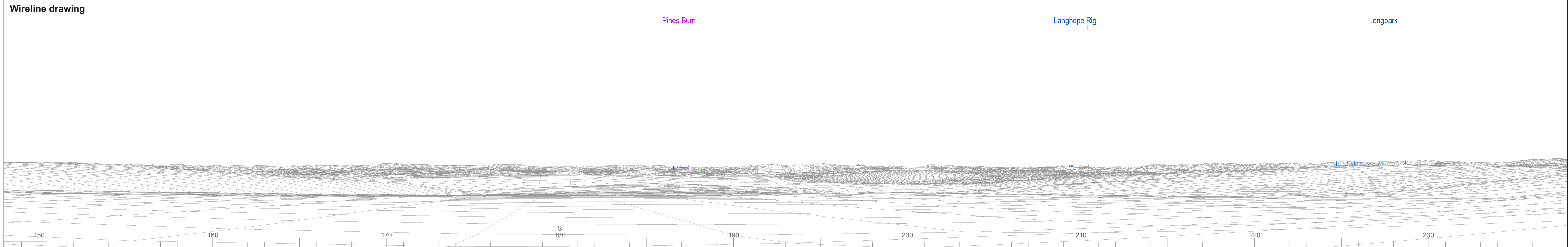
The terrain model assumes bare ground and is derived from OS Terrain 50 height data (obtained from Ordnance Survey in January 2023). Earth curvature and atmospheric refraction have been taken into account. The ZTV was calculated using ArcMap 10.8.1.

CB:JH EB:Härlich_J LUC FIG4_02_Xa_11838_r0_VPOverviews_45km; A3L 06/06/2023
Source: LUC, EDF



Dunside Wind Farm
Figure 4.2.2a
 Viewpoint 2: Nun Rig, Southern Upland Way





OS reference: 360067E 653747N
 AOD: 364 m
 Direction of view: 193°
 Nearest turbine: 2.86 km

Horizontal field of view: 90° (cylindrical projection)
 Principal distance: 522 mm
 Paper size: 841 x 297 mm (half A1)
 Correct printed image size: 820 x 260 mm

Camera: Nikon D750
 Lens: 50mm Fixed Focal Length
 Camera height: 1.5 m

Photography Date: 06/12/2022
 Photography Time: 15:07

Wind Farm Developments key
 (by status):

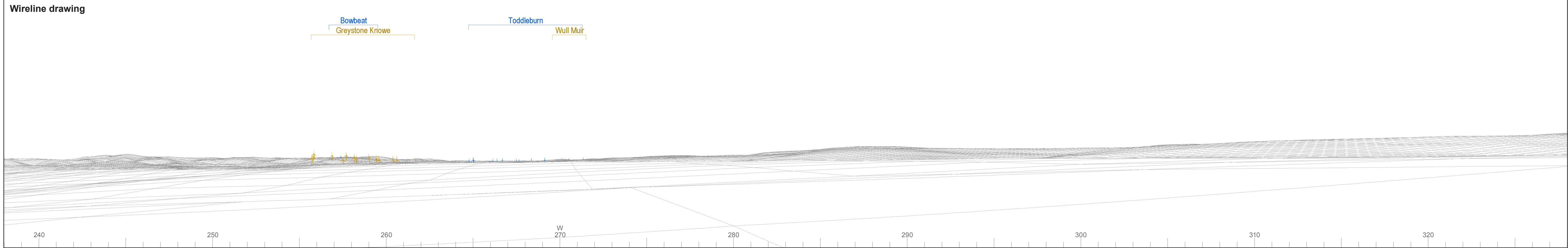
Proposed scheme
 Operational
 Under construction
 Consented

Appeal/PLI
 Application
 Newlands Hill*

* Newlands Hill wind farm final layout has been provided by its developer. Other projects at EIA scoping stage are not considered in Chapter 4: Landscape and Visual Impact Assessment but are considered in Appendix 4.4: Cumulative Assessment for Scoping Stage Sites.

Dunside Wind Farm
 Figure 4.2.2c
 Viewpoint 2: Nun Rig, Southern Upland Way

© Crown copyright and database rights 2023 Ordnance Survey data. Licence number: 0100051673



OS reference: 360067E 653747N
 AOD: 364 m
 Direction of view: 283°
 Nearest turbine: 2.86 km

Horizontal field of view: 90° (cylindrical projection)
 Principal distance: 522 mm
 Paper size: 841 x 297 mm (half A1)
 Correct printed image size: 820 x 260 mm

Camera: Nikon D750
 Lens: 50mm Fixed Focal Length
 Camera height: 1.5 m

Photography Date: 06/12/2022
 Photography Time: 15:07

Wind Farm Developments key (by status):

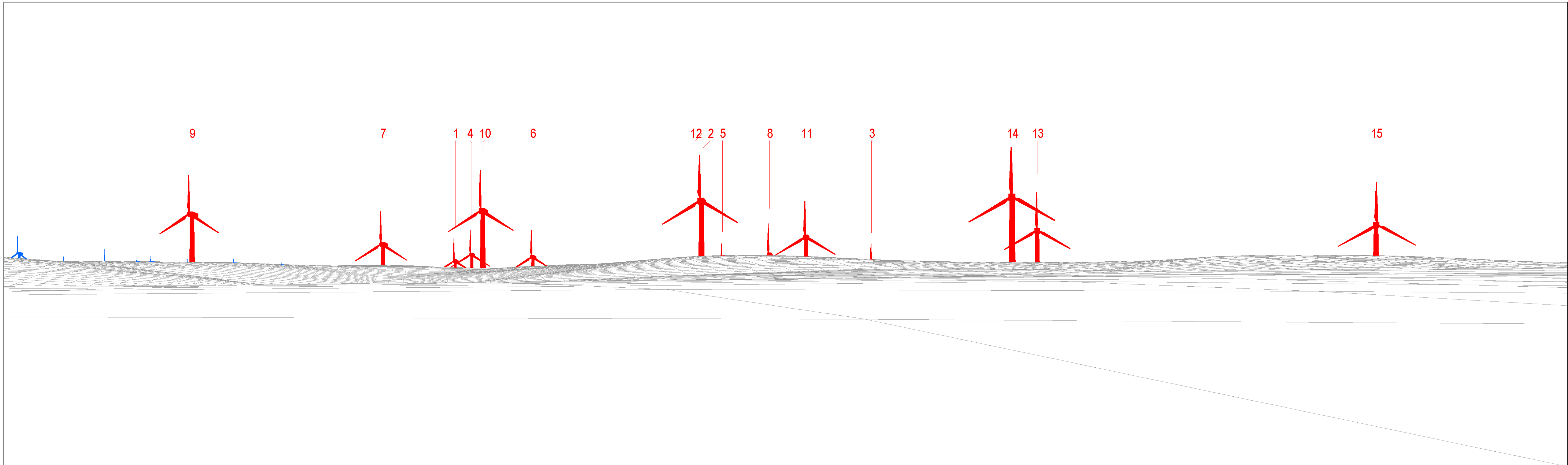
Proposed scheme
 Operational
 Under construction
 Consented

Appeal/PLI Application
 Newlands Hill*

* Newlands Hill wind farm final layout has been provided by its developer. Other projects at EIA scoping stage are not considered in Chapter 4: Landscape and Visual Impact Assessment but are considered in Appendix 4.4: Cumulative Assessment for Scoping Stage Sites.

Dunside Wind Farm
 Figure 4.2.2d
 Viewpoint 2: Nun Rig, Southern Upland Way

© Crown copyright and database rights 2023 Ordnance Survey data. Licence number: 0100051673



Wireline drawing

View flat at a comfortable arm's length

© Crown copyright and database rights 2023 Ordnance Survey data Licence number: 0100051673



OS reference:	360067E 653747N	Horizontal field of view:	53.5° (planar projection)
AOD:	364 m	Principal distance:	812.5 mm
Direction of view:	13°	Paper size:	841 x 297 mm (half A1)
Nearest turbine:	2.86 km	Correct printed image size:	820 x 260 mm

Wind Farm Developments key
(by status):

Proposed scheme
Operational

Dunside Wind Farm
Figure 4.2.2e
Viewpoint 2: Nun Rig, Southern Upland Way



Photomontage

View flat at a comfortable arm's length



OS reference: 360067E 653747N
AOD: 364 m
Direction of view: 13°
Nearest turbine: 2.86 km

Horizontal field of view: 53.5° (planar projection)
Principal distance: 812.5 mm
Paper size: 841 x 297 mm (half A1)
Correct printed image size: 820 x 260 mm

Camera: Nikon D750
Lens: 50mm Fixed Focal Length
Camera height: 1.5 m

Photography Date: 06/12/2022
Photography Time: 15:07

Dunside Wind Farm
Figure 4.2.2f
Viewpoint 2: Nun Rig, Southern Upland Way