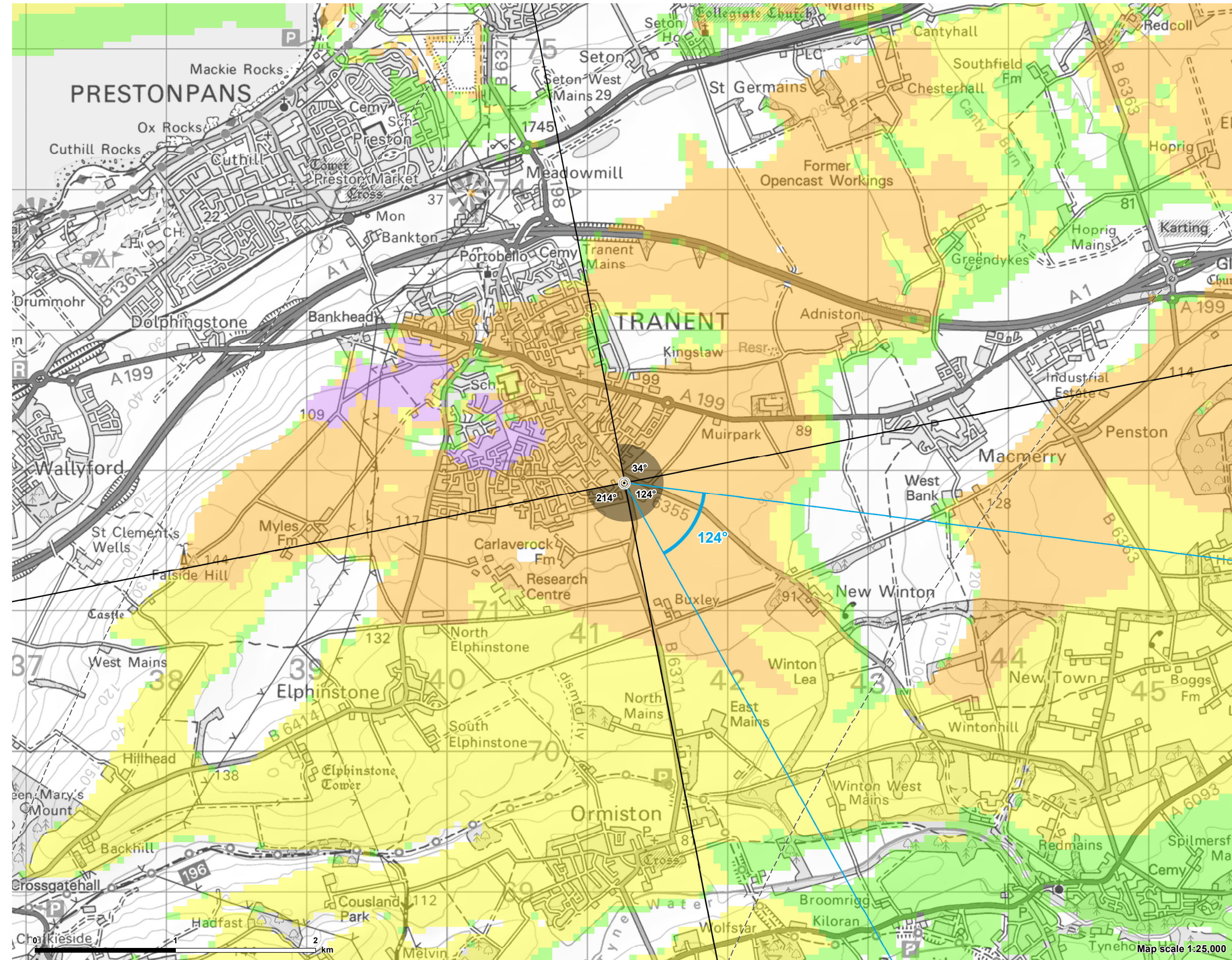


Contains Ordnance Survey data © Crown copyright and database right 2023. © Crown copyright and database rights 2023 Ordnance Survey 0100031673



© Crown copyright and database rights 2023 Ordnance Survey 0100031673

CB:JH EB:Harbich_J LUC FIG4_02_Xa_11838_r0_VPOverviews_45km_A3L 06/08/2023 Source: LUC, EDF

Figure 4.2.20:
Viewpoint 20 - B6371, Tranent

- Site Boundary
- Turbine
- 5km intervals from outermost turbines
- LVIA study area 45km from outermost turbines
- Viewpoint

Notes:
The ZTV is calculated to turbine tip height (220m) from a viewing height of 2m above ground level.

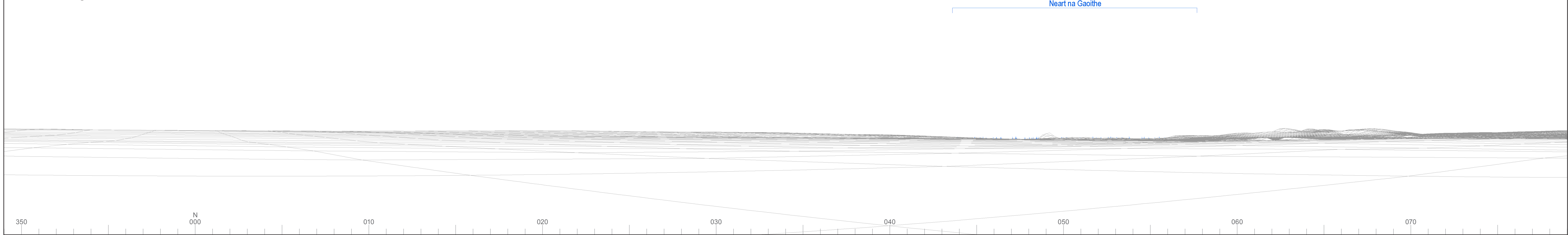
The terrain model assumes bare ground and is derived from OS Terrain 50 height data (obtained from Ordnance Survey in January 2023). Earth curvature and atmospheric refraction have been taken into account. The ZTV was calculated using ArcMap 10.8.1.



Baseline photograph

This image provides landscape and visual context only

Wireline drawing



OS reference: 341264E 671912N
 AOD: 95 m
 Direction of view: 34°
 Nearest turbine: 22.27 km

Horizontal field of view: 90° (cylindrical projection)
 Principal distance: 522 mm
 Paper size: 841 x 297 mm (half A1)
 Correct printed image size: 820 x 260 mm

Camera: Nikon D750
 Lens: 50mm Fixed Focal Length
 Camera height: 1.5 m

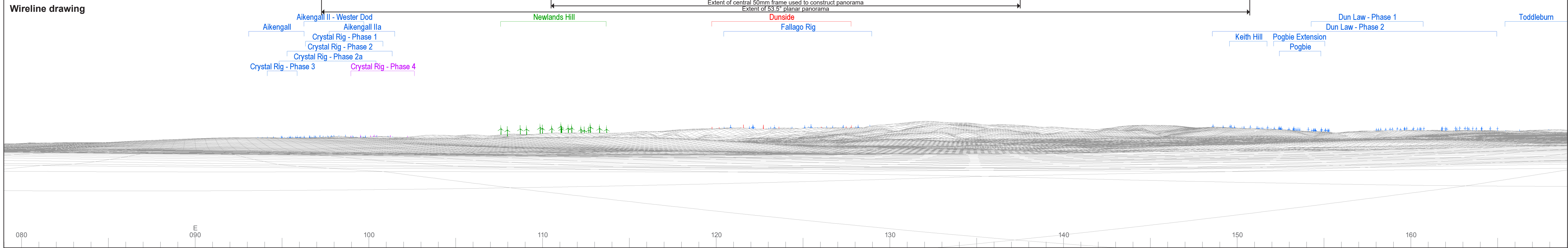
Photography Date: 23/02/2023
 Photography Time: 12:33

Wind Farm Developments key
 (by status):

Proposed scheme
 Operational
 Under construction
 Consented
 Appeal/PLI
 Application
 Newlands Hill*

* Newlands Hill wind farm final layout has been provided by its developer. Other projects at EIA scoping stage are not considered in Chapter 4: Landscape and Visual Impact Assessment but are considered in Appendix 4.4: Cumulative Assessment for Scoping Stage Sites.

© Crown copyright and database rights 2023 Ordnance Survey data. Licence number: 0100051673



OS reference: 341264E 671912N
AOD: 95 m
Direction of view: 124°
Nearest turbine: 22.27 km

Horizontal field of view: 90° (cylindrical projection)
Principal distance: 522 mm
Paper size: 841 x 297 mm (half A1)
Correct printed image size: 820 x 260 mm

Camera: Nikon D750
Lens: 50mm Fixed Focal Length
Camera height: 1.5 m

Photography Date: 23/02/2023
Photography Time: 12:33

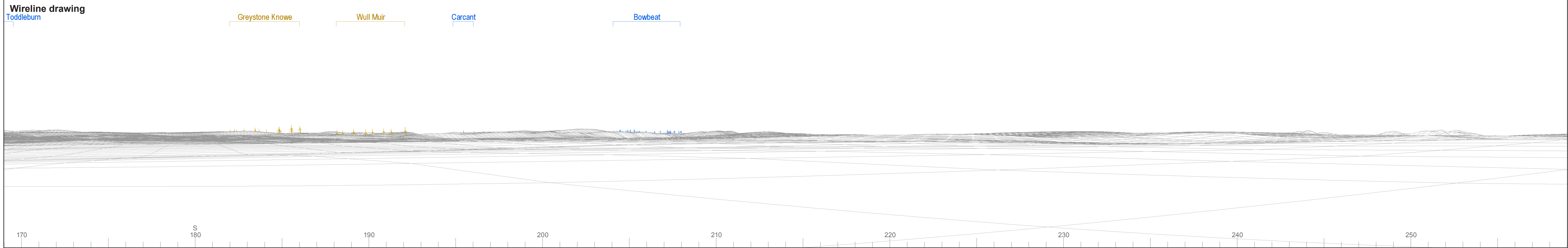
Wind Farm Developments key
(by status):

Proposed scheme
Operational
Under construction
Consented

Appeal/PLI
Application
Newlands Hill*

* Newlands Hill wind farm final layout has been provided by its developer. Other projects at EIA scoping stage are not considered in Chapter 4: Landscape and Visual Impact Assessment but are considered in Appendix 4.4: Cumulative Assessment for Scoping Stage Sites.

Dunside Wind Farm
Figure 4.2.20b
Viewpoint 20: B6371, Tranent



© Crown copyright and database rights 2023 Ordnance Survey data. Licence number: 0100051673



OS reference: 341264E 671912N
AOD: 95 m
Direction of view: 214°
Nearest turbine: 22.27 km

Horizontal field of view: 90° (cylindrical projection)
Principal distance: 522 mm
Paper size: 841 x 297 mm (half A1)
Correct printed image size: 820 x 260 mm

Camera: Nikon D750
Lens: 50mm Fixed Focal Length
Camera height: 1.5 m

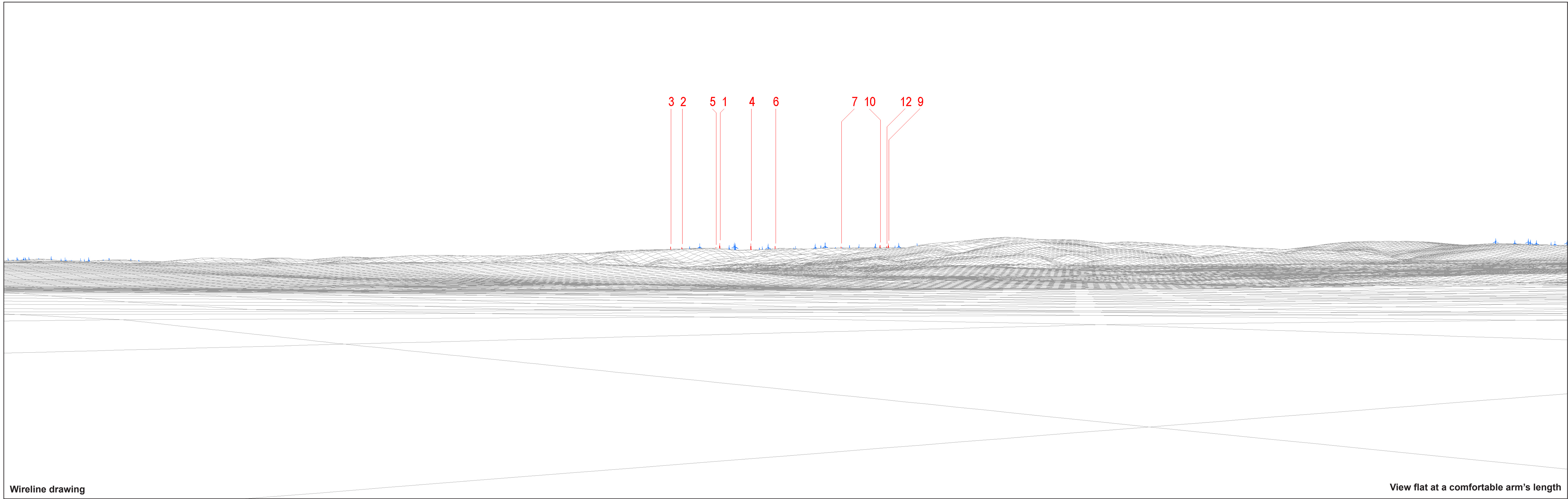
Photography Date: 23/02/2023
Photography Time: 12:33

Wind Farm Developments key
(by status):

Proposed scheme
Operational
Under construction
Consented

Appeal/PLI
Application
Newlands Hill*

* Newlands Hill wind farm final layout has been provided by its developer.
Other projects at EIA scoping stage are not considered in Chapter 4: Landscape and Visual Impact Assessment but are considered in Appendix 4.4: Cumulative Assessment for Scoping Stage Sites.



3 2 5 1 4 6 7 10 12 9

Wireline drawing

View flat at a comfortable arm's length



OS reference: 341264E 671912N
 AOD: 95 m
 Direction of view: 124°
 Nearest turbine: 22.27 km

Horizontal field of view: 53.5° (planar projection)
 Principal distance: 812.5 mm
 Paper size: 841 x 297 mm (half A1)
 Correct printed image size: 820 x 260 mm

Wind Farm Developments key
 (by status):

Proposed scheme
 Operational

Dunside Wind Farm
 Figure 4.2.20d
 Viewpoint 20: B6371, Tranent

© Crown copyright and database rights 2023 Ordnance Survey data Licence number: 0100051673



Photomontage

View flat at a comfortable arm's length



OS reference: 341264E 671912N
AOD: 95 m
Direction of view: 124°
Nearest turbine: 22.27 km

Horizontal field of view: 90° (cylindrical projection)
Principal distance: 522 mm
Paper size: 841 x 297 mm (half A1)
Correct printed image size: 820 x 260 mm

Camera: Nikon D750
Lens: 50mm Fixed Focal Length
Camera height: 1.5 m

Photography Date: 23/02/2023
Photography Time: 12:33

Dunside Wind Farm
Figure 4.2.20e
Viewpoint 20: B6371, Tranent